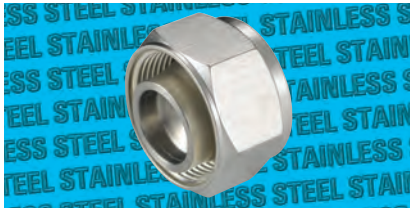




316 Stainless Steel Twin Ferrule Metric Tube Fittings



Plugs



Tube

0292	OD mm	£
P-3-FT	3	14.90
P-4	4	8.50
P-6-FT	6	8.50
P-8	8	9.50
P-10	10	10.20
P-12	12	12.90
P-14	14	18.60
P-15	15	17.00
P-16	16	31.30
P-18	18	36.15
P-20	20	45.90
P-22	22	56.40
P-25	25	64.20

Nuts



Tube

0292	OD mm	£
N-3	3	6.20
N-4	4	3.25
N-6	6	3.25
N-8	8	3.25
N-10	10	3.55
N-12	12	5.90
N-14	14	9.45
N-15	15	8.20
N-16	16	15.90
N-18	18	16.95
N-20	20	21.60
N-22	22	24.90
N-25	25	29.30

Back Ferrules



Tube

0292	OD mm	£
BF-3	3	5.05
BF-4	4	4.80
BF-6	6	4.20
BF-8	8	3.55
BF-10	10	5.90
BF-12	12	5.90
BF-14	14	8.20
BF-15	15	8.20
BF-16	16	8.55
BF-18	18	9.65
BF-20	20	13.55
BF-22	22	15.60
BF-25	25	18.50

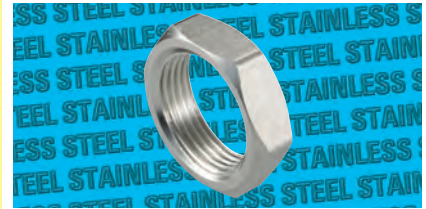
Front Ferrules



Tube

0292	OD mm	£
FF-3	3	5.65
FF-4	4	5.10
FF-6	6	4.10
FF-8	8	4.60
FF-10	10	5.10
FF-12	12	5.65
FF-14	14	7.90
FF-15	15	7.90
FF-16	16	8.55
FF-18	18	9.65
FF-20	20	13.55
FF-22	22	15.60
FF-25	25	18.50

Lock Nuts



To Suit Bulkheads

0292	OD mm	£
BLN-3	3	2.90
BLN-4	4	2.90
BLN-6	6	2.90
BLN-8	8	2.90
BLN-10-FT	10	3.10
BLN-12-FT	12	5.00
BLN-14	14	7.10
BLN-15	15	7.10
BLN-16-FT	16	8.20
BLN-18	18	8.65
BLN-20-FT	20	11.20
BLN-25	25	15.15

For **Stainless Steel** Tubing see page 1002

Hydraulics

Hydraulic QRC

Pneumatic QRC

Ind. Air Prep., Monitor & Test

KELM™ Pneumatics

Pneumatic & Vacuum Equipment

Valves

Ring Main Systems

Adaptors & Fittings

Stainless Steel

Malleable Iron

Hose, Tubing & Couplings

Clamps & Clips

Sprays & Adhesives

Blow Guns & Vacuum

Wash Down & Fuelling

Air Tools

Tools, Hardware & PPE