



316 Precision Instrumentation Pipe Fittings



Section 10 – Stainless Steel

Reducing Bushes



Male x Female, NPT

0342	Male	Female	£
PRB-02-01	1/8"	1/16"	6.20
PRB-04-02	1/4"	1/8"	5.45
PRB-06-02	3/8"	1/8"	6.60
PRB-06-04	3/8"	1/4"	7.10
PRB-08-02	1/2"	1/8"	11.05
PRB-08-04	1/2"	1/4"	12.20
PRB-08-06	1/2"	3/8"	13.00
PRB-12-04	3/4"	1/4"	23.30
PRB-12-06	3/4"	3/8"	23.65
PRB-12-08	3/4"	1/2"	27.15
PRB-16-04	1"	1/4"	40.30
PRB-16-06	1"	3/8"	40.75
PRB-16-08	1"	1/2"	41.60
PRB-16-12	1"	3/4"	42.85

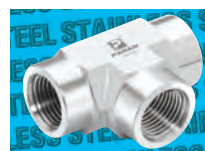
Equal Elbows



Female, NPT

0342	£
PPFE-02	1/8" 16.40
PPFE-04	1/4" 23.30
PPFE-06	3/8" 24.40
PPFE-08	1/2" 47.80
PPFE-12	3/4" 99.60
PPFE-16	1" 204.25

Equal Tees



Female, NPT

0342	£
PFT-02	1/8" 30.50
PFT-04	1/4" 32.20
PFT-06	3/8" 50.60
PFT-08	1/2" 77.45
PFT-12	3/4" 199.45
PFT-16	1" 368.40

Hydraulics

Hydraulic QRC

Pneumatic QRC

Ind. Air Prep, Monitor & Test

KELM™ Pneumatics

Pneumatic & Vacuum Equipment

Valves

Ring Main Systems

Adaptors & Fittings

Stainless Steel

Malleable Iron

Hose, Tubing & Couplings

Clamps & Clips

Sprays & Adhesives

Blow Guns & Vacuum

Wash Down & Fuelling

Air Tools

Tools, Hardware & PPE

1008

Pipe Caps



NPT

0342	£
PCP-02	1/8" 4.70
PCP-04	1/4" 7.10
PCP-06	3/8" 8.70
PCP-08	1/2" 11.05
PCP-12	3/4" 18.10
PCP-16	1" 33.05

Male, NPT

0342	£
PPME-02	1/8" 13.80
PPME-04	1/4" 16.40
PPME-06	3/8" 22.15
PPME-08	1/2" 42.00

Male, NPT

0342	£
PMT-02	1/8" 25.75
PMT-04	1/4" 27.30
PMT-06	3/8" 45.15
PMT-08	1/2" 68.00

Branch Tees



Male x Female, NPT

0342	£
PSE-01	1/16" 18.10
PSE-02	1/8" 16.50
PSE-04	1/4" 17.25
PSE-06	3/8" 23.20
PSE-08	1/2" 46.75
PSE-12	3/4" 98.45
PSE-16	1" 197.20

Female x Male, NPT

0342	£
PBT-02	1/8" 30.50
PBT-04	1/4" 31.80
PBT-06	3/8" 50.30
PBT-08	1/2" 77.45

Pipe Plugs



NPT

0342	£
PP-01	1/16" 5.75
PP-02	1/8" 6.40
PP-04	1/4" 7.40
PP-06	3/8" 8.30
PP-08	1/2" 11.05
PP-12	3/4" 17.00
PP-16	1" 29.05

Equal Crosses



Female, NPT

0342	£
PPC-02	1/8" 42.45
PPC-04	1/4" 43.35
PPC-06	3/8" 58.70
PPC-08	1/2" 91.45
PPC-12	3/4" 246.50
PPC-16	1" 516.35