



Stainless Steel Hygienic Fittings



Section 10 – Stainless Steel

Most process lines have to be frequently dismantled for cleaning and all ranges of our hygienic fittings are suitable for this purpose. Clamp unions provide a crevice free connection with

a rapid break down and assembly, with no tools required. RJT unions are probably the most widely used for frequent break down and cleaning.

IDF unions provide an alternative security and limit unauthorised access.

Sizes to suit O.D. TUBE

RJT Fittings

RJT Hex Nuts



0147	Size	£
RJT-NUT-1.0	1"	9.55
RJT-NUT-1.5	1.1/2"	11.85
RJT-NUT-2	2"	15.90
RJT-NUT-2.5	2.1/2"	14.35
RJT-NUT-3	3"	23.60
RJT-NUT-4	4"	21.30

RJT Plain Blank



0147	Size	£
RJT-BLANK-1	1"	2.85
RJT-BLANK-1.5	1.1/2"	4.15
RJT-BLANK-2	2"	4.40
RJT-BLANK-2.5	2.1/2"	6.00
RJT-BLANK-3	3"	5.10
RJT-BLANK-4	4"	10.10

RJT Seal EPDM



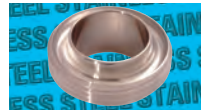
0147	Size	£
RJT-SEAL-1.0	1"	1.15
RJT-SEAL-1.5	1.1/2"	1.20
RJT-SEAL-2	2"	1.40
RJT-SEAL-2.5	2.1/2"	1.70
RJT-SEAL-3	3"	2.25
RJT-SEAL-4	4"	2.55

RJT Weld Liners



0147	Size	£
RJT-WL-1.0	1"	3.80
RJT-WL-1.5	1.1/2"	4.25
RJT-WL-2	2"	4.80
RJT-WL-2.5	2.1/2"	4.60
RJT-WL-3	3"	6.55
RJT-WL-4	4"	11.20

RJT Weld Males



0147	Size	£
RJT-WM-1.0	1"	9.55
RJT-WM-1.5	1.1/2"	13.40
RJT-WM-2	2"	17.00
RJT-WM-2.5	2.1/2"	19.60
RJT-WM-3	3"	17.80
RJT-WM-4	4"	23.85

RJT Spanner



0147	Size	£
RJT-SPANNER-1.0	1"	47.15
RJT-SPANNER-1.5	1.1/2"	47.50
RJT-SPANNER-2	2"	66.25
RJT-SPANNER-2.5	2.1/2"	66.60
RJT-SPANNER-3	3"	96.05
RJT-SPANNER-4	4"	110.85

IDF Fittings



IDF Hex Nuts

0147	Size	£
IDF-NUT-1.0	1"	9.20
IDF-NUT-1.5	1.1/2"	11.85
IDF-NUT-2	2"	15.40
IDF-NUT-2.5	2.1/2"	18.40
IDF-NUT-3	3"	24.10
IDF-NUT-4	4"	27.50

IDF Plain Blank



0147	Size	£
IDF-BLANK-1.0	1"	5.00
IDF-BLANK-1.5	1.1/2"	6.45
IDF-BLANK-2	2"	9.35
IDF-BLANK-2.5	2.1/2"	16.00
IDF-BLANK-3	3"	23.40

IDF Seal EPDM



0147	Size	£
IDF-SEAL-1.0	1"	0.95
IDF-SEAL-1.5	1.1/2"	1.20
IDF-SEAL-2	2"	1.35
IDF-SEAL-2.5	2.1/2"	1.70
IDF-SEAL-3	3"	1.55
IDF-SEAL-4	4"	3.00

Material: EPDM

IDF Weld Liners



0147	Size	£
IDF-WL-1.0	1"	3.85
IDF-WL-1.5	1.1/2"	5.60
IDF-WL-2	2"	6.50
IDF-WL-2.5	2.1/2"	8.85
IDF-WL-3	3"	9.05
IDF-WL-4	4"	18.75

IDF Weld Males



0147	Size	£
IDF-WM-1.0	1"	6.00
IDF-WM-1.5	1.1/2"	7.80
IDF-WM-2	2"	11.20
IDF-WM-2.5	2.1/2"	11.60
IDF-WM-3	3"	14.45
IDF-WM-4	4"	34.50

Hygienic Tube

N.B. Delivery may take up to 48 hours.



3 Metre Lengths

0214	Size	£
ODT316L-W-H-1.0	1"	84.70
ODT316L-W-H-1.5	1.1/2"	125.50
ODT316L-W-H-2	2"	169.10
ODT316L-W-H-2.5	2.1/2"	199.10
ODT316L-W-H-3	3"	288.05
ODT316L-W-H-4	4"	480.10