



Stainless Steel Hygienic Fittings



- Hydraulics
- Hydraulic QRC
- Pneumatic QRC
- Ind. Air Prep., Monitor & Test
- KELM™ Pneumatics
- Pneumatic & Vacuum Equipment
- Valves
- Ring Main Systems
- Adaptors & Fittings
- Stainless Steel**
- Malleable Iron
- Hose, Tubing & Couplings
- Clamps & Clips
- Sprays & Adhesives
- Blow Guns & Vacuum
- Wash Down & Fuelling
- Air Tools
- Tools, Hardware & PPE

Plain Fittings



Plain Tees Short

0147	Size	£
HYG-TS-1.0	1"	10.55
HYG-TS-1.5	1.1/2"	14.35
HYG-TS-2	2"	15.90
HYG-TS-2.5	2.1/2"	28.10
HYG-TS-3	3"	38.70
HYG-TS-4	4"	76.45



Plain Tees Long

0147	Size	£
HYG-TL-1.0	1"	12.25
HYG-TL-1.5	1.1/2"	22.55
HYG-TL-2	2"	28.30
HYG-TL-2.5	2.1/2"	37.10
HYG-TL-3	3"	47.60
HYG-TL-4	4"	80.60



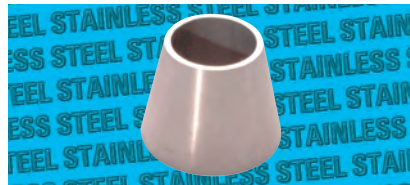
Plain 90° Bends Short

0147	Size	£
HYG-90S-1.0	1"	11.40
HYG-90S-1.5	1.1/2"	12.40
HYG-90S-2	2"	24.40
HYG-90S-2.5	2.1/2"	27.50
HYG-90S-3	3"	33.90
HYG-90S-4	4"	84.95



Plain 90° Bends Long

0147	Size	£
HYG-90L-1.0	1"	11.00
HYG-90L-1.5	1.1/2"	14.55
HYG-90L-2	2"	21.50
HYG-90L-2.5	2.1/2"	26.15
HYG-90L-3	3"	39.90
HYG-90L-4	4"	75.55



Plain Concentric Reducers

0147	Size	£
HYG-CR-1.5-1.0	1.1/2" x 1"	11.45
HYG-CR-2.0-1.5	2" x 1.1/2"	11.95
HYG-CR-2.5-1.5	2.1/2" x 1.1/2"	19.60
HYG-CR-2.5-2.0	2.1/2" x 2"	14.35
HYG-CR-3.0-2.0	3" x 2"	19.00
HYG-CR-3.0-2.5	3" x 2.1/2"	14.75
HYG-CR-4.0-2.0	4" x 2"	33.90
HYG-CR-4.0-2.5	4" x 2.1/2"	26.80
HYG-CR-4.0-3.0	4" x 3"	21.50



Plain Eccentric Reducers

0147	Size	£
HYG-ER-1.5-1.0	1.1/2" x 1"	11.10
HYG-ER-2.0-1.5	2" x 1.1/2"	12.60
HYG-ER-2.5-1.5	2.1/2" x 1.1/2"	17.60
HYG-ER-2.5-2.0	2.1/2" x 2"	14.45
HYG-ER-3.0-2.0	3" x 2"	18.10
HYG-ER-3.0-2.5	3" x 2.1/2"	15.80
HYG-ER-4.0-2.0	4" x 2"	38.60
HYG-ER-4.0-3.0	4" x 3"	38.60

Clamp Fittings



Clamp Welding Ferrules

0147	Size	£
CLAMP-WF-1.0	1"	11.20
CLAMP-WF-1.5	1.1/2"	13.55
CLAMP-WF-2.0	2"	13.40
CLAMP-WF-2.5	2.1/2"	17.90
CLAMP-WF-3.0	3"	23.50
CLAMP-WF-4.0	4"	32.45



Clamp Fitting

0147	Size	£
CLAMP-C-1.0	1"	16.00
CLAMP-C-1.5	1.1/2"	16.00
CLAMP-C-2.0	2"	18.10
CLAMP-C-2.5	2.1/2"	19.60
CLAMP-C-3.0	3"	20.80
CLAMP-C-4.0	4"	27.65



Clamp Seal, EPDM

0147	Size	£
CLAMP-SEAL-1.0	1"	1.30
CLAMP-SEAL-1.5	1.1/2"	1.30
CLAMP-SEAL-2.0	2"	2.00
CLAMP-SEAL-2.5	2.1/2"	2.45
CLAMP-SEAL-3.0	3"	2.85
CLAMP-SEAL-4.0	4"	3.55