



None Asbestos Flange Gaskets



Page Tech Sheet **2023**

IBC Gaskets

Maximum Temperature/ Pressure can't be used simultaneously and are dependant on thickness.



N34 150lb, ASME B16.5/B16.21

1092		£
GS12-150	1/2"	3.55
GS34-150	3/4"	2.90
GS1-150	1"	4.15
GS114-150	1.1/4"	2.70
GS112-150	1.1/2"	8.45
GS2-150	2"	10.00
GS212-150	2.1/2"	7.30
GS3-150	3"	11.20
GS4-150	4"	18.25

N34 300lb, ASME B16.5/B16.21

1092		£
GS12-300	1/2"	2.70
GS1-300	1"	4.60
GS112-300	1.1/2"	7.00
GS3-300	3"	11.75

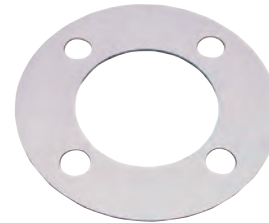
N34 PN16, DIN Standard DIN-DVGW 96.01 e-845

1092		£
GSPN16-34	3/4"	9.20
GSPN16-1	1"	2.60
GSPN16-114	1.1/4"	2.90
GSPN16-112	1.1/2"	3.90
GSPN16-2	2"	7.30
GSPN16-212	2.1/2"	8.40
GSPN16-3	3"	11.85
GSPN16-4	4"	19.10

N34 PN40, DIN Standard DIN-DVGW 96.01 e-845

1092		£
GSPN40-2	2"	5.65
GSPN40-3	3"	9.25

Full Face Gaskets



N34 150lb, ASME B16.5/B16.21

1092		£
GSFF12-150	1/2"	7.35
GSFF1-150	1"	10.10
GSFF114-150	1.1/4"	5.80
GSFF112-150	1.1/2"	13.75
GSFF2-150	2"	17.30
GSFF212-150	2.1/2"	12.90
GSFF3-150	3"	21.85
GSFF4-150	4"	31.00

N34 300lb, ASME B16.5/B16.21

1092		£
GSFF1-300	1"	10.80
GSFF2-300	2"	18.50

N34 PN16, DIN Standard DIN-DVGW 96.01 e-845

1092		£
GSFF16-12	1/2"	4.90
GSFF16-1	1"	7.30
GSFF16-114	1.1/4"	8.70
GSFF16-112	1.1/2"	9.65
GSFF16-2	2"	13.65
GSFF16-212	2.1/2"	17.20
GSFF16-3	3"	20.95
GSFF16-4	4"	29.90

N34 PN40, DIN Standard DIN-DVGW 96.01 e-845

1092		£
GSFF40-1	1"	5.35
GSFF40-112	1.1/2"	6.65
GSFF40-2	2"	10.10
GSFF40-4	4"	25.50

Section 11 – Malleable Iron

Hydraulics

Hydraulic QRC

Pneumatic QRC

Ind. Air Prep., Monitor & Test

KELM™ Pneumatics

Pneumatic & Vacuum Equipment

Valves

Ring Main Systems

Adaptors & Fittings

Stainless Steel

Malleable Iron

Hose, Tubing & Couplings

Clamps & Clips

Sprays & Adhesives

Blow Guns & Vacuum

Wash Down & Fuelling

Air Tools

Tools, Hardware & PPE

1077

Customers who bought from this page also purchased **Pipe Wrenches** – see page 1496

