



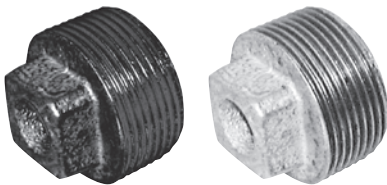
Malleable Iron Pipe Fittings

CRANE

Section 11 – Malleable Iron

Plain Plug, Hollow (Fig 147)

Tech Sheet 10672



Black, BSPT

1091



£

C147-12N	1/2"	1.40
C147-34N	3/4"	1.80
C147-1N	1"	2.35
C147-114N	1.1/4"	3.25
C147-112N	1.1/2"	6.10
C147-2N	2"	8.50
C147-212N	2.1/2"	13.90
C147-3N	3"	25.65
C147-4N	4"	47.25

Galvanised, BSPT

1091



£

C147-12	1/2"	2.70
C147-34	3/4"	3.45
C147-1	1"	4.25
C147-114	1.1/4"	7.35
C147-112	1.1/2"	11.45
C147-2	2"	16.00
C147-212	2.1/2"	28.00
C147-3	3"	41.85
C147-4	4"	77.10

Female Equal Socket (Fig 177)

Tech Sheet 10670



Black, BSPT

1091



£

C177-14N	1/4"	2.10
C177-38N	3/8"	2.10
C177-12N	1/2"	1.90
C177-34N	3/4"	2.25
C177-1N	1"	3.25
C177-114N	1.1/4"	6.35
C177-112N	1.1/2"	9.30
C177-2N	2"	13.45
C177-212N	2.1/2"	20.60
C177-3N	3"	37.30
C177-4N	4"	48.25

Galvanised, BSPT

1091

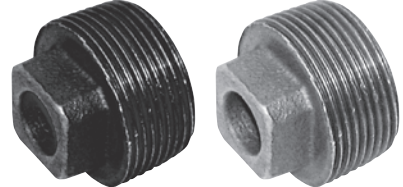


£

C177-14	1/4"	3.70
C177-38	3/8"	3.70
C177-12	1/2"	3.45
C177-34	3/4"	4.50
C177-1	1"	5.80
C177-114	1.1/4"	12.85
C177-112	1.1/2"	17.40
C177-2	2"	25.10
C177-212	2.1/2"	40.95
C177-4	4"	95.75

Plain Plug, Solid (Fig 148)

Tech Sheet 10672



Black, BSPT

1091



£

C148-18N	1/8"	0.90
C148-14N	1/4"	0.95
C148-38N	3/8"	1.20
C148-12N	1/2"	4.30
C148-34N	3/4"	4.15
C148-1N	1"	5.90
C148-114N	1.1/4"	8.50
C148-112N	1.1/2"	12.10
C148-2N	2"	17.30

Galvanised, BSPT

1091



£

C148-18	1/8"	1.70
C148-14	1/4"	1.60
C148-38	3/8"	2.10
C148-12	1/2"	7.65
C148-34	3/4"	8.25
C148-1	1"	10.85
C148-114	1.1/4"	16.75
C148-112	1.1/2"	22.50
C148-2	2"	29.60

- Hydraulics
- Hydraulic QRC
- Pneumatic QRC
- Ind. Air Prep, Monitor & Test
- KELM™ Pneumatics
- Pneumatic & Vacuum Equipment
- Valves
- Ring Main Systems
- Adaptors & Fittings
- Stainless Steel
- Malleable Iron
- Hose, Tubing & Couplings
- Clamps & Clips
- Sprays & Adhesives
- Blow Guns & Vacuum
- Wash Down & Fuelling
- Air Tools
- Tools, Hardware & PPE

Customers who bought from this page also purchased **150lb 316 Stainless Steel Pipe Fittings** – see pages 839-843

