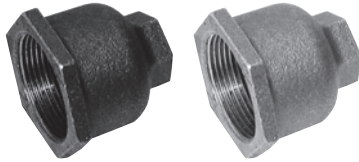




## Malleable Iron Pipe Fittings

## CRANE

### Reducing Socket (Fig 179)



Black, BSPT

1091	Male	Female	£
C179-38-14N	3/8"	1/4"	3.25
C179-12-14N	1/2"	1/4"	3.10
C179-12-38N	1/2"	3/8"	2.55
C179-34-14N	3/4"	1/4"	5.05
C179-34-38N	3/4"	3/8"	3.90
C179-34-12N	3/4"	1/2"	3.10
C179-1-14N	1"	1/4"	7.20
C179-1-12N	1"	1/2"	3.70
C179-1-34N	1"	3/4"	3.90
C179-114-12N	1.1/4"	1/2"	7.05
C179-114-1N	1.1/4"	1"	7.10
C179-112-34N	1.1/2"	3/4"	11.75
C179-112-1N	1.1/2"	1"	8.85
C179-112-114N	1.1/2"	1.1/4"	9.15
C179-2-34N	2"	3/4"	19.75
C179-2-1N	2"	1"	17.10
C179-2-114N	2"	1.1/4"	15.90
C179-2-112N	2"	1.1/2"	12.90
C179-212-112N	2.1/2"	1.1/2"	25.35
C179-212-2N	2.1/2"	2"	23.40
C179-3-1N	3"	1"	39.80
C179-3-2N	3"	2"	38.85
C179-3-212N	3"	2.1/2"	39.90
C179-4-2N	4"	2"	60.65
C179-4-212N	4"	2.1/2"	71.80

Galvanised, BSPT

1091	Male	Female	£
C179-38-14	3/8"	1/4"	5.65
C179-12-14	1/2"	1/4"	5.65
C179-12-38	1/2"	3/8"	4.90
C179-34-14	3/4"	1/4"	8.00
C179-34-12	3/4"	1/2"	5.55
C179-1-12	1"	1/2"	7.25
C179-1-34	1"	3/4"	6.80
C179-114-34	1.1/4"	3/4"	15.10
C179-114-1	1.1/4"	1"	13.20
C179-112-34	1.1/2"	3/4"	23.15
C179-112-1	1.1/2"	1"	17.40
C179-112-114	1.1/2"	1.1/4"	19.30
C179-2-12	2"	1/2"	36.40
C179-2-34	2"	3/4"	37.00
C179-2-1	2"	1"	33.50
C179-2-114	2"	1.1/4"	31.20
C179-2-112	2"	1.1/2"	27.00
C179-212-1	2.1/2"	1"	64.25
C179-212-112	2.1/2"	1.1/2"	49.10
C179-212-2	2.1/2"	2"	47.20
C179-3-1	3"	1"	80.40
C179-3-2	3"	2"	58.80
C179-3-212	3"	2.1/2"	60.40
C179-4-2	4"	2"	117.40
C179-4-212	4"	2.1/2"	108.90
C179-4-3	4"	3"	108.90

### Hexagon Bush (Fig 140)



Black, BSPT

1091	Male	Female	£
C140-14-18N	1/4"	1/8"	2.35
C140-38-18N	3/8"	1/8"	2.90
C140-38-14N	3/8"	1/4"	2.05
C140-12-18N	1/2"	1/8"	2.15
C140-12-14N	1/2"	1/4"	1.50
C140-12-38N	1/2"	3/8"	1.50
C140-34-18N	3/4"	1/8"	3.55
C140-34-14N	3/4"	1/4"	2.90
C140-34-38N	3/4"	3/8"	2.30
C140-34-12N	3/4"	1/2"	1.80
C140-1-14N	1"	1/4"	3.90
C140-1-38N	1"	3/8"	3.80
C140-1-12N	1"	1/2"	2.15
C140-1-34N	1"	3/4"	2.30
C140-114-14N	1.1/4"	1/4"	7.20
C140-114-38N	1.1/4"	3/8"	8.00
C140-114-34N	1.1/4"	3/4"	4.00
C140-114-1N	1.1/4"	1"	2.80
C140-112-14N	1.1/2"	1/4"	9.65
C140-112-38N	1.1/2"	3/8"	10.10
C140-112-12N	1.1/2"	1/2"	5.65
C140-112-34N	1.1/2"	3/4"	6.15
C140-112-1N	1.1/2"	1"	4.45
C140-112-114N	1.1/2"	1.1/4"	4.10
C140-2-12N	2"	1/2"	11.60
C140-2-34N	2"	3/4"	12.20
C140-2-1N	2"	1"	9.20
C140-2-114N	2"	1.1/4"	8.85
C140-2-112N	2"	1.1/2"	8.50
C140-212-12N	2.1/2"	1/2"	18.75
C140-212-34N	2.1/2"	3/4"	18.75
C140-212-1N	2.1/2"	1"	20.50
C140-212-114N	2.1/2"	1.1/4"	20.50
C140-212-112N	2.1/2"	1.1/2"	19.60
C140-212-2N	2.1/2"	2"	14.20
C140-3-114N	3"	1.1/4"	33.70
C140-3-112N	3"	1.1/2"	28.45
C140-3-2N	3"	2"	23.15
C140-3-212N	3"	2.1/2"	25.65
C140-4-1N	4"	1"	53.30
C140-4-112N	4"	1.1/2"	63.20
C140-4-2N	4"	2"	63.20
C140-4-212N	4"	2.1/2"	63.20
C140-4-3N	4"	3"	52.60

Tech Sheet 10671



Galvanised, BSPT

1091	Male	Female	£
C140-14-18	1/4"	1/8"	4.20
C140-38-18	3/8"	1/8"	4.50
C140-38-14	3/8"	1/4"	3.70
C140-12-18	1/2"	1/8"	4.10
C140-12-14	1/2"	1/4"	2.45
C140-12-38	1/2"	3/8"	2.70
C140-34-18	3/4"	1/8"	6.55
C140-34-14	3/4"	1/4"	5.15
C140-34-38	3/4"	3/8"	4.10
C140-34-12	3/4"	1/2"	3.10
C140-1-14	1"	1/4"	7.35
C140-1-38	1"	3/8"	6.75
C140-1-12	1"	1/2"	4.25
C140-1-34	1"	3/4"	4.05
C140-114-12	1.1/4"	1/2"	8.90
C140-114-34	1.1/4"	3/4"	8.00
C140-114-1	1.1/4"	1"	5.35
C140-112-14	1.1/2"	1/4"	18.00
C140-112-38	1.1/2"	3/8"	19.00
C140-112-12	1.1/2"	1/2"	11.40
C140-112-34	1.1/2"	3/4"	12.35
C140-112-1	1.1/2"	1"	8.15
C140-112-114	1.1/2"	1.1/4"	8.60
C140-2-12	2"	1/2"	23.40
C140-2-34	2"	3/4"	22.80
C140-2-1	2"	1"	17.20
C140-2-114	2"	1.1/4"	17.85
C140-2-112	2"	1.1/2"	16.00
C140-212-12	2.1/2"	1/2"	36.15
C140-212-34	2.1/2"	3/4"	35.80
C140-212-1	2.1/2"	1"	36.15
C140-212-114	2.1/2"	1.1/4"	36.15
C140-212-112	2.1/2"	1.1/2"	36.15
C140-212-2	2.1/2"	2"	29.55
C140-3-1	3"	1"	56.60
C140-3-112	3"	1.1/2"	55.00
C140-3-2	3"	2"	44.55
C140-3-212	3"	2.1/2"	43.70
C140-4-114	4"	1.1/4"	117.10
C140-4-2	4"	2"	103.20
C140-4-212	4"	2.1/2"	103.20
C140-4-3	4"	3"	85.90

Hydraulics

Hydraulic QRC

Pneumatic QRC

Ind. Air Prep, Monitor & Test

KELM™ Pneumatics

Pneumatic & Vacuum Equipment

Valves

Ring Main Systems

Adaptors & Fittings

Stainless Steel

Malleable Iron

Hose, Tubing & Couplings

Clamps & Clips

Sprays & Adhesives

Blow Guns & Vacuum

Wash Down & Fuelling

Air Tools

Tools, Hardware & PPE

1103