



Industrial PU Ducting



AIRDUC PUR 350 MHF-AS

Made from premium-grade ether Pre-PUR polyurethane, reinforced with a spring steel wire helix.

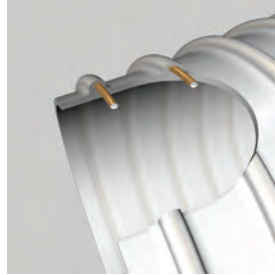
Wall thickness: 0.7mm approx.

Applications: Suction and transport hose for abrasive materials e.g. dust, powder, granules, fibres etc.

Also suitable for liquid media or fume extraction e.g. oil mist and welding fumes.

- Permanent anti-static wall
- Good resistance to microbe and hydrolysis
- Small bend radius
- Excellent low temperature flexibility
- Wire spiral reinforcement can be earthed
- Good resistance to oil, petrol and chemicals
- High tensile strength and tear resistance
- Smooth bore, optimised flow (observe direction of flow arrow)
- Good resistance to UV and ozone

Use clamp type 212/212EC (refer to page 1190)



Working Temperature:
-40°C to +90°C
Intermittent to:
+125°C



Tech Sheet 10394

AIRDUC HT-PUR 351

Made from special high-temperature Pre-PUR polyurethane, reinforced with a spring steel wire helix.

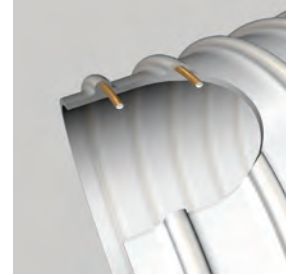
Wall thickness: 1.0mm approx.

Applications: Suction and transport hose for hot, abrasive materials e.g. dust, powder, granules, fibres, liquid & fumes.

Suitable for industrial vacuum cleaners, printing machines, blowers, textile and paper industries.

- Excellent abrasion resistance
- Excellent low/high temperature range
- Wire spiral reinforcement can be earthed
- Good resistance to oil, petrol and chemicals
- High tensile strength and tear resistance
- Smooth bore, optimised flow (observe direction of flow arrow)
- Good resistance to UV and ozone

Use clamp type 212/212EC (refer to page 1190)



Working Temperature:
-40°C to +125°C
Intermittent to:
+150°C



Tech Sheet 10393

Light/Medium Weight, 0.7mm wall, Anti Static, 10 Metres

	0392	ID mm	OD mm	bar	Vacuum bar	kg per roll	£
Ring Main Systems	350-0038-0000	38	45	1.780	0.525	0.310	180.00
	350-0050-0000	50	57	1.350	0.435	0.400	192.50
Adaptors & Fittings	350-0065-0000	65	70	1.020	0.295	0.520	219.50
	350-0075-0000	75	82	0.910	0.220	0.590	243.50
	350-0100-0000	100	107	0.690	0.115	0.800	313.00
Stainless Steel	350-0125-0000	125	132	0.550	0.080	0.980	392.50
	350-0150-0000	150	157	0.455	0.075	1.400	458.50
Malleable Iron	350-0160-0000	160	167	0.415	0.065	1.500	494.50
	350-0175-0000	175	182	0.355	0.050	1.630	544.00
	350-0200-0000	200	207	0.315	0.050	1.860	624.50
Hose, Tubing & Couplings	350-0225-0000	225	232	0.265	0.035	2.080	704.50
	350-0250-0000	250	257	0.240	0.020	2.310	803.50
	350-0300-0000	300	307	0.200	0.020	2.770	939.00

Medium Weight, 1mm wall, High Temperature, 10 Metres

	0392	ID mm	OD mm	bar	Vacuum bar	kg per roll	£
Ring Main Systems	351-0050-1015	50	58	1.440	0.365	0.410	381.00
	351-0065-1015	65	73	1.110	0.255	0.530	434.00
Adaptors & Fittings	351-0075-1015	75	84	0.965	0.195	0.640	482.00
	351-0100-1015	100	109	0.725	0.120	0.970	622.00
	351-0125-1015	125	134	0.590	0.085	1.200	776.50
Stainless Steel	351-0150-1015	150	159	0.485	0.075	1.520	910.50
Malleable Iron	351-0200-1015	200	209	0.370	0.055	2.000	1238.50