



Fixing & Support Systems

Section 13 – Clamps & Clips

SUPERFIX LF M8 for Plastic Pipes

Tech Sheet 2138

- Single screw insulated pipe clips P1 coated, allowing easy installation & maintenance for plastic pipe from 14mm to 110mm OD.



Easy Lock

	5558	mm	£
Hydraulics	595050	14-16	1.95
	595055	20-23	2.00
Hydraulic QRC	595060	25-28	2.10
	595065	32-35	2.50
	595070	40-43	2.60
Pneumatic QRC	595075	50-55	3.05
	595080	63-67	3.90
Ind. Air Prep., Monitor & Test	595090	90	5.90
	595095	110	8.25



OD-Strut Pipe Clamp

	5558	mm	£		5558	mm	£
	598811	6-8	2.20		598835	71-74	4.40
	598812	8-11	2.20		598836	74-77	4.50
	598813	11-12	2.30		598837	77-80	5.15
	598814	15-17	2.30		598838	83-86	5.55
	598815	18-20	2.30		598839	86-90	5.55
	598816	21-23	2.30		598842	96-100	5.55
	598817	23-26	2.30		598843	100-103	5.55
	598818	26-29	2.35		598844	109-112	6.50
	598819	29-32	2.35		598845	112-115	7.05
	598822	32-36	2.40		598847	125-128	8.40
	598823	36-39	2.50		598849	135-138	8.40
	598824	39-42	2.60		598853	138-141	8.75
	598825	42-45	2.60		598854	148-151	8.85
	598826	46-50	2.60		598855	157-160	9.70
	598827	50-54	2.60		598856	160-164	12.45
	598828	52-56	2.60		598857	164-167	12.75
	598829	56-60	2.80		598858	167-170	12.90
	598831	60-63	2.95		598859	176-179	13.00
	598832	62-64	3.10		598862	179-182	14.55
	598833	64-67	4.20		598863	189-192	15.55
	598834	67-71	4.30		598864	196-200	19.35

CADDY® Support Systems

- Male to female thread reducers. Electro zinc plated.



Hexagonal Reducers

	5558	Female	Male	1-9	10+
Stainless Steel	583710	6	8	0.90	0.80
	583720	8	6	0.80	0.75
Malleable Iron	583730	8	10	0.90	0.80
	583740	8	12	0.70	0.65
	583750	10	8	0.90	0.80
Hose, Tubing & Couplings	583760	10	12	0.80	0.75
	583770	12	8	1.10	1.00
Clamps & Clips	583780	12	10	1.10	1.00

- FM & VDS approved beam clamps with threaded and plain holes in electro zinc plated.



Tech Sheet 2139

Beam Clamps

	5558	mm	mm	£
	389500	9	-	2.70
	389510	11	-	3.20
	389520	13	-	3.65
	389505	17	-	6.45
	386810	-	M8	2.70
	386820	-	M10	3.75
	386830	-	M12	3.65

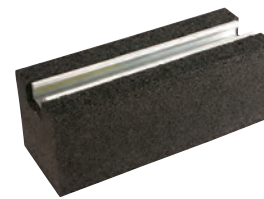
- Wedge anchors electro zinc plated with internal thread FM, VDS & DIN 4102-2 approved.



Drop in Wedge Anchors

	5558	mm	1-9	10+
	593180	M6	0.60	0.55
	593190	M8	0.60	0.55
	593200	M10	0.70	0.65
	400415	M12	1.25	1.10
	400416	M16	1.95	1.85

- A quick & easy installation method to support pipe & cable installations on flat roofs and below raised floor systems. Consists of heavy duty uv resistant Polyethylene-Foam block with Caddy® Erristrut channel insert. Lightweight yet strong, non-absorbent & shock absorbing.



Pipe Piers

	5558	LxWxH mm	£
182400		267 x 102 x 102	29.60