



Pumps & Process Equipment



Air Operated Double Diaphragm Pumps

Typical Applications

- Drum fluid transfer
- Unloading fluids
- Bilge pumping
- Chemical evacuation
- Dewatering and sump evacuation
- Tank and sump drainage

Typical Fluids Handled

- Chemicals
- Contaminated surface water
- Adhesives, varnishes, dispersions, solvents and stains
- Resins, latexes, wood preservative stains, concrete and primers

Features

- 1 in. (25.4 mm) ANSI end-porting
- High flow – 50 gpm (189 lpm) in a compact, portable size
- Fluid pressure to 120 psi (8.6 bar, 0.86 MPa)
- E-coated centre section for corrosive environments
- Equipped with an effective and reliable air valve system
- Can also be remotely-controlled using an external controller



Husky 1050, BSPP

0074	Body	Seats	Balls	Diaphragms	£
647121	Aluminium	Geolast	Geolast	Geolast	1111.80
647109	Aluminium	Stainless	PTFE	PTFE	1653.90

Typical Applications

- Filter press
- Tank stripping
- Bilge pumping
- Sand and ball mill pumping
- Oil transfer and oil skimming
- Chemical plating

Typical Fluids Handled

- Latex
- Corrosive fluids
- Acids: hydrochloric, ferric, sulfuric, nitric and phosphoric
- Slurries: petroleum, lime, clay, ferrite, salt/brine and pumice
- Sludge: secondary and clarifier
- Pottery slip

Features

- 1.1/2 in. (38.1 mm) ANSI end-porting
- High flow – 100 gpm (378 lpm) in a compact, portable size
- Fluid pressure to 120 psi (8.4 bar, 0.84 MPa)
- Lube-free operation
- Patented, high-reliability “closed centre” air valve is “online” serviceable
- Epoxy-coated air section for tough environmental conditions
- Can also be remotely-controlled using an external controller



Husky 1590, BSPP

0074	Body	Seats	Balls	Diaphragms	£
DBC666	Aluminium	Geolast	Geolast	Geolast	1442.50
DBD311	Stainless	Stainless	PTFE	PTFE	4964.55
DB2911	Polypropylene	Polypropylene	PTFE	PTFE	3749.00

Typical Applications

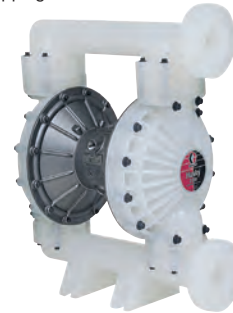
- Drum fluid transfer
- Bulk fluid supply
- Chemical evacuation
- Ground water and sump evacuation
- Waste fluid removal
- Tank and bilge drainage
- Slurry and sludge transfer
- Filter press feed

Typical Fluids Handled

- Acids, alkalies, solvents, suspensions, dispersions, electroplating baths, paints, varnishes, resins, latex, adhesives, effluent sludge & stabilizers
- Ship cleaning and stripping chemicals

Features

- 2 in. (50.8 mm) ANSI end-porting
- Larger ports for more flow – up to 150 gpm (568 lpm)
- Fluid pressure to 120 psi (8.4 bar, 0.84 MPa)
- Lube-free operation
- Patented, high-reliability “closed centre” air valve is “online” serviceable
- Epoxy-coated air section for tough environmental conditions
- Can also be remotely-controlled using an external controller



Husky 2150, BSPP

0074	Body	Seats	Balls	Diaphragms	£
DFCGGG	Aluminium	Geolast	Geolast	Geolast	1864.05
DFC666	Aluminium	Santoprene	Santoprene	Santoprene	1770.35
DF2911	Polypropylene	Polypropylene	PTFE	PTFE	5421.30

Typical Applications

- Chemical transfers
- Filter press-feed
- Dewatering
- Chemicals
- Bulk paint resins
- Ceramic slip

Features

- 3 in. (76.2 mm) ANSI centre porting
- Bolted leak-free flanged connections – no clamp bands used
- Easy air valve maintenance
- Large flow paths can handle high viscosities
- Heavy-duty construction
- Fluid flow up to 275 gpm (1040 lpm)



Husky 3275, BSPP

0074	Body	Seats	Balls	Diaphragms	£
652021	Aluminium	Stainless	PTFE	PTFE	5619.80

Hydraulics

Hydraulic QRC

Pneumatic QRC

Ind. Air Prep., Monitor & Test

KELM™ Pneumatics

Pneumatic & Vacuum Equipment

Valves

Ring Main Systems

Adaptors & Fittings

Stainless Steel

Malleable Iron

Hose, Tubing & Couplings

Clamps & Clips

Sprays & Adhesives

Blow Guns & Vacuum

Wash Down & Fuelling

Air Tools

Tools, Hardware & PPE