



## Air Compressors



Hydraulics

Hydraulic QRC

Pneumatic QRC

Ind. Air Prep., Monitor & Test

KELM™ Pneumatics

Pneumatic & Vacuum Equipment

Valves

Ring Main Systems

Adaptors & Fittings

Stainless Steel

Malleable Iron

Hose, Tubing & Couplings

Clamps & Clips

Sprays & Adhesives

Blow Guns & Vacuum

Wash Down & Fuelling

Air Tools

Tools, Hardware & PPE

Tools, Hardware & PPE

Tools, Hardware & PPE

Tools, Hardware & PPE

Tools, Hardware & PPE

Tools, Hardware & PPE

Tools, Hardware & PPE

Tools, Hardware & PPE

### Silent Belt Drive

Tech Sheet 10486



Low Noise

| 0085      | CFM  | LPM  | bar | PSI | HP  | KW  | Litres | ⚡        | £       |
|-----------|------|------|-----|-----|-----|-----|--------|----------|---------|
| 2026-2020 | 18   | 514  | 11  | 160 | 4   | 3   | 270    | 415/3/50 | 2700.65 |
| 2026-2021 | 22.9 | 653  | 11  | 160 | 5.5 | 4   | 270    | 415/3/50 | 2935.50 |
| 2026-2022 | 28.9 | 827  | 11  | 160 | 7.5 | 5.5 | 500    | 415/3/50 | 3808.95 |
| 2026-2023 | 42.4 | 1210 | 11  | 160 | 10  | 7.5 | 500    | 415/3/50 | 4220.95 |

### EngineAir

Tech Sheet 10485



Petrol Driven

| 0085      | CFM | LPM | bar | PSI | HP   | Litres | £       |
|-----------|-----|-----|-----|-----|------|--------|---------|
| 2026-2024 | 10  | 281 | 10  | 145 | 3.5  | 100    | 1545.00 |
| 2026-2025 | 12  | 348 | 10  | 145 | 4.8  | 100    | 1699.50 |
| 2026-2026 | 17  | 476 | 14  | 203 | 7.1  | 270    | 3399.00 |
| 2026-2027 | 26  | 741 | 14  | 203 | 10.7 | 270    | 3708.00 |

### Belt Drive Compressors

Tech Sheet 10231



Redline

| 0085      | CFM  | LPM | bar | PSI | HP | KW  | Litres | ⚡   | £      |
|-----------|------|-----|-----|-----|----|-----|--------|-----|--------|
| 2026-0009 | 8.25 | 234 | 9   | 130 | 3  | 2.2 | 90     | 230 | 587.10 |
| 2026-0010 | 8.25 | 234 | 9   | 130 | 3  | 2.2 | 150    | 230 | 669.50 |

Tech Sheet 10232

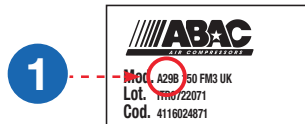


BlueLine

| 0085      | CFM  | LPM  | bar | PSI | HP  | KW  | Litres | ⚡        | £       |
|-----------|------|------|-----|-----|-----|-----|--------|----------|---------|
| 2026-0011 | 11.2 | 320  | 10  | 145 | 3   | 2.2 | 50     | 230/1/50 | 611.80  |
| 2026-0012 | 13.8 | 393  | 10  | 145 | 3   | 2.2 | 150    | 230/1/50 | 784.85  |
| 2026-0013 | 13.8 | 393  | 10  | 145 | 3   | 2.2 | 150    | 400/3/50 | 784.85  |
| 2026-0014 | 13.8 | 393  | 10  | 145 | 3   | 2.2 | 200    | 230/1/50 | 871.40  |
| 2026-0015 | 13.8 | 393  | 10  | 145 | 3   | 2.2 | 200    | 400/3/50 | 871.40  |
| 2026-0016 | 18   | 514  | 11  | 160 | 4   | 3   | 200    | 400/3/50 | 1087.40 |
| 2026-0017 | 22.9 | 653  | 11  | 160 | 5.5 | 4   | 200    | 400/3/50 | 1311.25 |
| 2026-0018 | 28.9 | 827  | 11  | 160 | 7.5 | 5.5 | 270    | 400/3/50 | 1803.50 |
| 2026-0019 | 42.4 | 1210 | 11  | 160 | 10  | 7.5 | 270    | 400/3/50 | 2513.25 |

### How to identify the correct kit for your compressor

To identify the service kit to suit your compressor, locate the machines data plate (typically on the receiver saddle between the pump and motor). The first three digits of the machine model number directly relate to the pump model that is fitted. i.e Mod: B5900 will be fitted with a B59 pump unit.



| ABAC Code  | Pump Model    | Description                | Air Compressor Models                                       |
|------------|---------------|----------------------------|---|
| 8973037657 | A29/B & A39/B | Service Kit                | All models starting with A29/B, A39/B or PRO A29/B - A39/B  |
| 8973037658 |               | Service Kit + 1 Ltr Altair |   |
| 8973037624 | B49           | Service Kit                | AS/Red Line 600/200, B4919/200, B4900 LN, PRO B4900-200-FT4 |
| 8973037625 |               | Service Kit + 2 Ltr Altair |   |
| 8973037628 | B59           | Service Kit                | B5924/200, B5900 SIL (pre July '05)                         |
| 8973037629 |               | Service Kit + 2 Ltr Altair |   |
| 8973037632 | B60           | Service Kit                | B630/270, PRO B6000-270 FT.7.5                              |
| 8973037633 |               | Service Kit + 2 Ltr Altair |   |
| 8973037646 | B60 SILENT    | Service Kit                | B6000 LN  |
| 8973037647 |               | Service Kit + 2 Ltr Altair |   |
| 8973037636 | B70           | Service Kit                | B741/270, PRO B7000 270 FT10                                |
| 8973037637 |               | Service Kit + 4 Ltr Altair |   |
| 8973037648 | B70 SILENT    | Service Kit                | B7000 LN  |
| 8973037649 |               | Service Kit + 4 Ltr Altair |   |



Direct Delivery Mainland UK Only All prices include a 2-3 day delivery charge for Mainland UK. For Next Day delivery please contact our sales office for a quote