

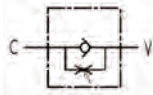
Threaded Hydraulic Valves



Barrel Flow Control Valve



Tech Sheet
10536



BSPP

0347



BFCV04	1/4"	20	300	19.90
BFCV06	3/8"	45	300	21.20
BFCV08	1/2"	70	300	24.95
BFCV12	3/4"	110	250	35.60
BFCV16	1"	160	250	51.85

Barrel Flow Control Valve, with Check



Tech Sheet
10537



BSPP

0347



BFCVC04	1/4"	20	300	22.10
BFCVC06	3/8"	45	300	23.70
BFCVC08	1/2"	70	300	27.50
BFCVC12	3/4"	110	250	39.90
BFCVC16	1"	160	250	59.85

Compensated Flow Control Valve



Tech Sheet
10538

Maximum Working Pressure:
250 bar



BSPP

0347



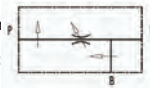
CFVC04	1/4"	25	59.85
CFVC06	3/8"	30	60.90
CFVC08	1/2"	45	92.10

3 Port Flow Control Valve, Ongoing to Pressure



Tech Sheet
10539

Maximum Working Pressure:
350 bar



BSPP

0347



3FCVP06	3/8"	60	115.05
3FCVP08	1/2"	80	117.70
3FCVP12	3/4"	120	202.10
3FCVP16	1"	200	245.60

3 Port Flow Control Valve, Excess to Tank



Tech Sheet
10540



Maximum Working Pressure:
350 bar



BSPP

0347



3FCVT06	3/8"	60	93.80
3FCVT08	1/2"	80	96.45
3FCVT12	3/4"	120	175.90

2 Way Flow Divider, Cast Iron



Tech Sheet
10541



Maximum Working Pressure:
250 bar



BSPP

0347



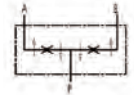
CFD063	3/8"	3/8"	3	175.00
CFD066	3/8"	3/8"	6	162.30
CFD0610	3/8"	3/8"	10	162.30
CFD0620	3/8"	3/8"	20	162.30
CFD0632	3/8"	3/8"	32	162.30
CFD0840	1/2"	3/8"	40	164.40
CFD0860	1/2"	3/8"	60	164.40
CFD0880	1/2"	3/8"	80	175.00

2 Way Flow Divider, Steel



Tech Sheet
10542

Maximum Working Pressure:
250 bar



BSPP

0347

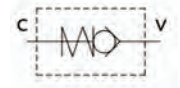


SFD0610	3/8"	3/8"	10	134.30
SFD0620	3/8"	3/8"	20	134.30
SFD0840	1/2"	3/8"	40	134.30
SFD0860	1/2"	3/8"	60	134.30

Male Check Valve



Tech Sheet
10543



BSPP, 1 bar Cracking Pressure

0347



MVC04	1/4"	350	12.15
MVC06	3/8"	350	13.25
MVC08	1/2"	350	14.60
MVC12	3/4"	350	23.20
MVC16	1"	320	34.45
MVC20	1.1/4"	320	61.15
MVC24	1.1/2"	320	81.20
MVC32	2"	320	101.60