



Cetop Directional Control Valves



Page Tech Sheet **10682**

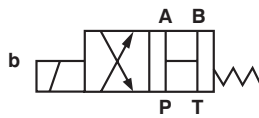
Fluid Temperature:
-20°C to +70°C

Maximum Working Pressure:
350 bar

Max Flow Rate: 80 l/min
Viscosity 2.8-100 mm²/s
ISO 4401 Size 3
DIN 24340 Size 6
IP65

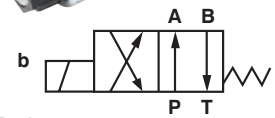
Section 1 – Hydraulics

Cetop 3, Single Solenoid



2 Position, All Ports Open,
Spring Offset to Centre

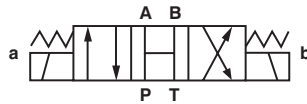
0451	Model		£
1010-1000	ADC 3 2HY/RX14/AC110N9K	110V AC	97.00
1010-1001	ADC 3 2HY/RX14/DC24N9K	24V DC	97.00



2 Position, Spring Offset End to End

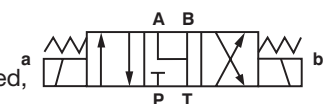
0451	Model		£
1010-1002	ADC 3 2DY/RX14/AC110N9K	110V AC	97.00
1010-1003	ADC 3 2DY/RX14/DC24N9K	24V DC	97.00

Cetop 3, Double Solenoid



3 Position, All Ports Open,
Spring Centred

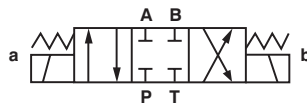
0451	Model		£
1010-1004	ADC 3 3HY/RX14/AC110N9K	110V AC	122.00
1010-1005	ADC 3 3HY/RX14/DC12N9K	12V DC	122.00
1010-1006	ADC 3 3HY/RX14/DC24N9K	24V DC	122.00



3 Position, A, B & T Connected,
Spring Centred

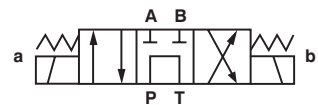
0451	Model		£
1010-1009	ADC 3 3JY/RX14/AC110N9K	110V AC	122.00
1010-1010	ADC 3 3JY/RX14/DC24N9K	24V DC	122.00

3 Position, All Ports Closed,
Spring Centred



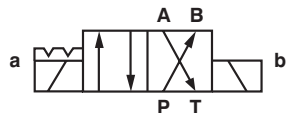
0451	Model		£
1010-1007	ADC 3 3EY/RX14/AC110N9K	110V AC	122.00
1010-1008	ADC 3 3EY/RX14/DC24N9K	24V DC	122.00

3 Position, P & T Connected
A & B Blocked, Spring Centred



0451	Model		£
1010-1011	ADC 3 3GY/RX14/AC110N9K	110V AC	132.50
1010-1012	ADC 3 3GY/RX14/DC24N9K	24V DC	132.50

3 Position, Detent



0451	Model		£
1010-1013	ADC 3 2DD/RX14/AC110N9K	110V AC	132.50
1010-1014	ADC 3 2DD/RX14/DC24N9K	24V DC	132.50