



# Hydraulic Directional Control Valves

EAT-N | Vickers

Page Tech Sheet **3111**

## CETOP3 Single Solenoid Directional Control Valves

Max flow rates upto 80 l/min.  
Mounting Interface:  
ISO 4401 Size 3.  
ANSI/B93.7M Size 3.  
CETOP RP6SH Size 3.  
DIN 24340 (NG6).

**Temperature Limits:**  
Min -20°C (-4°F)  
Max +70°C (+150°F)

**Maximum Pressure:**  
350 bar (5075 psi)



Section 1 – Hydraulics

Hydraulics

Hydraulic QRC

Pneumatic QRC

Ind. Air Prep, Monitor & Test

KELM™ Pneumatics

Pneumatic & Vacuum Equipment

Valves

Ring Main Systems

Adaptors & Fittings

Stainless Steel

Malleable Iron

Hose, Tubing & Couplings

Clamps & Clips

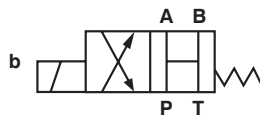
Sprays & Adhesives

Blow Guns & Vacuum

Wash Down & Fuelling

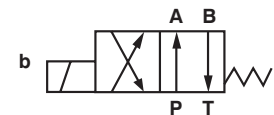
Air Tools

Tools, Hardware & PPE



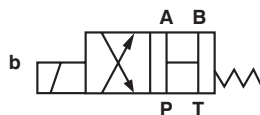
2 Position, All Ports Open, Spring Offset End to Centre

0343		Manufacturer's Code	£
859160	24V DC	DG4V 3 0B M U H7 60	97.00
859195	110V AC	DG4V 3 0B M U A6 60	97.00



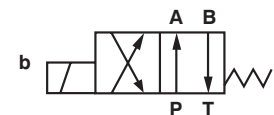
2 Position, Spring Offset End to End

0343		Manufacturer's Code	£
529762	24V DC	DG4V 3 2A M U H7 60	97.00
529763	110V AC	DG4V 3 2A M U A6 60	97.00



2 Position, All Ports Open, Spring Offset End to Centre, Water Resistant Override

0343		Manufacturer's Code	£
869951	12V DC	DG4V 3 0B H M U G7 60	139.00
870804	24V DC	DG4V 3 0B H M U H7 60	139.00



2 Position, Spring Offset End to End, Water Resistant Override

0343		Manufacturer's Code	£
869959	12V DC	DG4V 3 2A H M U G7 60	139.00
870221	24V DC	DG4V 3 2A H M U H7 60	139.00
871358	110/120V 50/60Hz	DG4V 3 2A H M U B6 60	139.00
871505	220/240V 50/60Hz	DG4V 3 2A H M U D6 60	139.00

Other voltages are available. Please contact Business Development Team for more details.