



## Hydraulic Directional Control Valves

**EAT-N** | Vickers

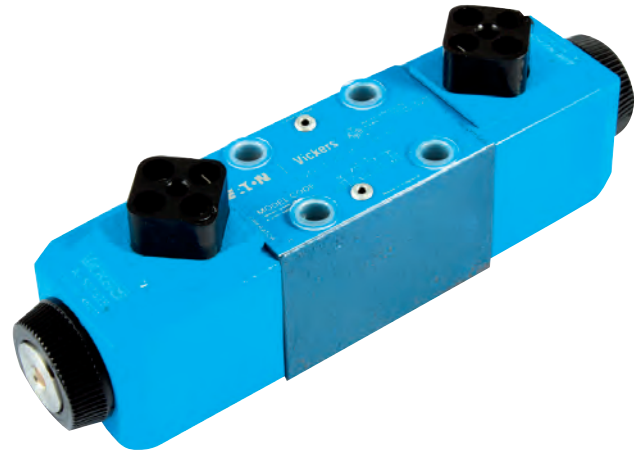
Page Tech Sheet **3111**

### CETOP3 Double Solenoid Directional Control Valves

Max flow rates upto 80 l/min.  
Mounting Interface:  
ISO 4401 Size 3.  
ANSI/B93.7M Size 3.  
CETOP RP6SH Size 3.  
DIN 24340 (NG6).

**Temperature Limits:**  
Min -20°C (-4°F)  
Max +70°C (+150°F)

**Maximum Pressure:**  
350 bar (5075 psi)



Section 1 – Hydraulics

Hydraulics

Hydraulic QRC

Pneumatic QRC

Ind. Air Prep, Monitor & Test

KELM™ Pneumatics

Pneumatic & Vacuum Equipment

Valves

Ring Main Systems

Adaptors & Fittings

Stainless Steel

Malleable Iron

Hose, Tubing & Couplings

Clamps & Clips

Sprays & Adhesives

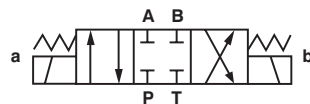
Blow Guns & Vacuum

Wash Down & Fuelling

Air Tools

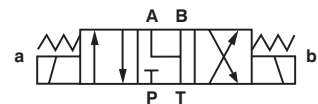
Tools, Hardware & PPE

235



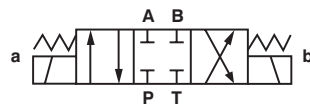
3 Position, All Ports Closed, Spring Centred

0343		Manufacturer's Code	£
529761	110V AC	DG4V 3 2C M U A6 60	122.00



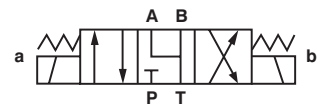
3 Position, A, B & T Connected, Spring Centred

0343		Manufacturer's Code	£
565465	24V DC	DG4V 3 6C M U H7 60	122.00
859177	110V AC	DG4V 3 6C M U A6 60	122.00



3 Position, All Ports Closed, Spring Centred, Water Resistant Override

0343		Manufacturer's Code	£
859172	220/240V	DG4V 3 2C H M U D6 60	177.00
870177	24V DC	DG4V 3 2C H M U H7 60	177.00
870378	12V DC	DG4V 3 2C H M U G7 60	177.00



3 Position, A, B & T Connected, Spring Centred, Water Resistant Override

0343		Manufacturer's Code	£
869952	12V DC	DG4V 3 6C H M U G7 60	177.00
869953	24V DC	DG4V 3 6C H M U H7 60	177.00
02-146111	110/120V 50/60Hz	DG4V 3 6C H M U B6 60	177.00

Other voltages are available. Please contact Business Development Team for more details.

Telephone  
**(01332) 851300**

Email  
**enquiries@tidyco.co.uk**

Store  
**tidyco.co.uk/store**