



Hydraulic Directional Control Valves

EAT-N | Vickers

Page Tech Sheet **3112**

CETOP5 Single Solenoid Directional Control Valves

Max flow rates upto 120 l/min.
Mounting Interface:
ISO 4401 Size 5.
NFPA D02
DIN 24340 (NG10).

Temperature Limits:
Min -20°C (-4°F)
Max +70°C (+150°F)

Maximum Pressure:
350 bar (5075 psi)



Section 1 – Hydraulics

Hydraulics

Hydraulic QRC

Pneumatic QRC

Ind. Air Prep., Monitor & Test

KELM™ Pneumatics

Pneumatic & Vacuum Equipment

Valves

Ring Main Systems

Adaptors & Fittings

Stainless Steel

Malleable Iron

Hose, Tubing & Couplings

Clamps & Clips

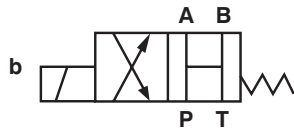
Sprays & Adhesives

Blow Guns & Vacuum

Wash Down & Fuelling

Air Tools

Tools, Hardware & PPE



2 Position, All Ports Open, Spring Offset End to Centre

0343



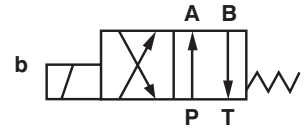
110V AC

Manufacturer's Code

DG4V 5 0B M U A6 20



151.00



2 Position, Spring Offset End to End, Water Resistant Override

0343



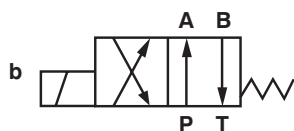
24V DC

Manufacturer's Code

DG4V 5 2AJ H M U H6 20



209.00



2 Position, Spring Offset End to End

0343



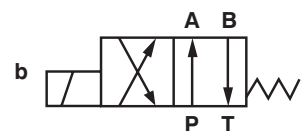
24V DC

Manufacturer's Code

DG4V 5 2AJ M U H6 20



151.00



2 Position, Spring Offset End to End

0343



110V AC

Manufacturer's Code

DG4V 5 2A M U A6 20



151.00

Other voltages are available. Please contact Business Development Team for more details.