

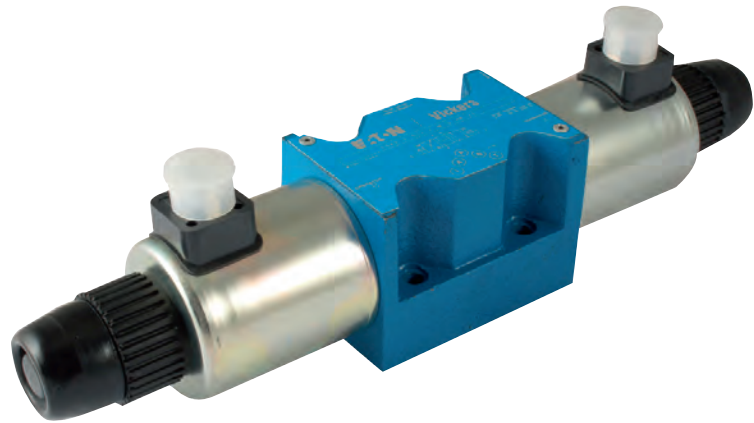


# Hydraulic Directional Control Valves

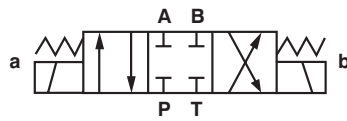
EAT-N | Vickers

Page Tech Sheet **3112**

## CETOP5 Double Solenoid Directional Control Valves

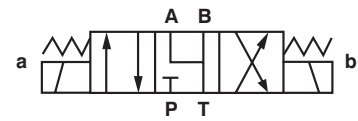


Section 1 – Hydraulics



All Ports Closed, Spring Centred

0343		Manufacturer's Code	£
616776	24V DC	DG4V 5 2CJ M U H6 20	204.00
616777	110V AC	DG4V 5 2C M U A6 20	204.00



A & B to T, P Blocked, Spring Centred, Water Resistant Overrides

0343		Manufacturer's Code	£
529677	24V DC	DG4V 5 6CJ H M U H6 20	285.00



A & B to T, P Blocked, Spring Centred

0343		Manufacturer's Code	£
616780	24V DC	DG4V 5 6CJ M U H6 20	204.00
616781	110V AC	DG4V 5 6C M U A6 20	204.00



All Ports Open, Spring Centred

0343		Manufacturer's Code	£
616788	24V DC	DG4V 5 0CJ M U H6 20	204.00
616789	110V DC	DG4V 5 0C M U A6 20	204.00

Hydraulics

Hydraulic QRC

Pneumatic QRC

Ind. Air Prep., Monitor & Test

KELM™ Pneumatics

Pneumatic & Vacuum Equipment

Valves

Ring Main Systems

Adaptors & Fittings

Stainless Steel

Malleable Iron

Hose, Tubing & Couplings

Clamps & Clips

Sprays & Adhesives

Blow Guns & Vacuum

Wash Down & Fuelling

Air Tools

Tools, Hardware & PPE