



Hydraulic Filtration

Drive Couplings

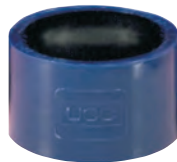


- Cost effective, easy to assemble.
- 3 models available for bores up to 28, 42 & 55mm.

Coupling Half Pilot Bored

0045		£
DCR28PB	8	30.15
DCR42PB	12	36.60
DCR55PB	16	84.50

Tech Sheet 832



- Crowned tooth form gears permitting axial and angular misalignment.
- Maintenance free-no lubrication.
- Comprehensive range for the transmission market.

Drive Coupling Sleeve

0045	To Suit	£
DC28S	8	17.40
DC42S	12	21.80
DC55S	16	71.50

Gauge Isolator Valves

Designed to prevent pressure gauge damage and extend gauge life. The gauge isolator valve when installed between gauge and pressure line protects the pressure gauge from continuous hydraulic pressure, surges or shock loads.



Single Station:
Cast iron and steel.
Knurled aluminium knob twist to lock or push to read type.

Port Size:
Single station = G1/4
Weight:
Single station = 0.90kg

Maximum W/P:
350 bar

Single Station

0045		Element Media	£
GI1414	Push to Read	1/4"	86.75

Modular Filler Breathers

Construction:
Moulded in non-corrodible glass-filled nylon combining strength with lightweight design.

- Options:**
- Single 63mm diameter hole filler breather installation that eliminates drilled and tapped holes using self-locking clamps.
 - 6 Hole Filler breather installation that uses 6 x No. 10 thread forming screws.
 - 3 Hole Filler breather installation that uses 3 x No. 10 thread forming screws.



Filtration: Expanded polyurethane foam, 10 micron.

Seals: Nitrile.

Tech Sheet 636

Non-pressurized, 10 Micron

0045		£
AB98210011UC	Single Hole	21.60
AB98810011UC	6 Hole	23.00
AB68118	3 Hole	27.00

Screw-on Type Air Breather (IP65)

Manufactured from non-corrodible glass filled nylon.



Tech Sheet 636

Un-pressurized 10 Micron, BSPP

0045		£
AB98410101UC	3/4"	14.60

Manufactured from in glass filled nylon and glass-coupled polypropylene.

Non-pressurized 10 Micron, BSPP

0045		£
SAB6101	G1/2	21.00
SAB7101	G3/4	21.00

Note: 'G' signifies BSPP (Parallel)
'R' signifies BSPT (Tapered)

Suction Strainers without Bypass

Construction:

- Stainless steel media 30% glass-filled nylon head.
- Zintec centre tube and end cap.
- Epoxy adhesives.

Filter Media: 125 micron.

Flow Range: 15-500 l/min.

Mounting Threads: G1/2 up to G3.



Maximum Working Temperature:
+90°C

BSPP

0045	Old Ref.		LPM	£
SE1319	SS1A1S1AP	1/2"	15	20.30
SE1320	SS1B2A1AP	3/4"	25	27.00
SE1457	SS1B3A1AP	1"	50	28.70
SE1323	SS1C4A1AP	1.1/2"	95	36.80
SE1324	SS1C5A1AP	1.1/2"	130	45.85
SE1326	SS1C6A1AP	2"	180	59.20
SE1219	SS1D7A1AP	2"	225	99.50
SE1220	SS1D8A1AP	2.1/2"	350	115.15
SE1221	SS1D9A1AP	3"	500	144.80

Hydraulics

Hydraulic QRC

Pneumatic QRC

Ind. Air Prep., Monitor & Test

KELM™ Pneumatics

Pneumatic & Vacuum Equipment

Valves

Ring Main Systems

Adaptors & Fittings

Stainless Steel

Malleable Iron

Hose, Tubing & Couplings

Clamps & Clips

Sprays & Adhesives

Blow Guns & Vacuum

Wash Down & Fuelling

Air Tools

Tools, Hardware & PPE