

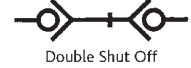


Hydraulic Couplings



Temperature Range:
-40°C up to +100°C (Nitrile)
-25°C up to +200°C (Viton)

Maximum Working Pressure:
Maximum static working pressure
with safety factor 4:1



T3800 Series



Couplings, BSPP

0071				Operation	£
TE-3810	3/8"	350	Nitrile	With valve	38.95
TE-3810 H	3/8"	350	Nitrile	No valve	24.70
TE-3810 UV	3/8"	350	Nitrile	No valve	32.35
TE-3810 HV	3/8"	350	Viton	No valve	31.45
TE-3810 V	3/8"	350	Viton	With valve	47.45
TE-3810 RV	3/8"	300	Viton	With valve	454.10

Couplings with Pressure Eliminator, BSPP

0071				Operation	£
TE-3811	3/8"	350	Nitrile	With valve	50.40
TE-3811 V	3/8"	350	Viton	With valve	49.40

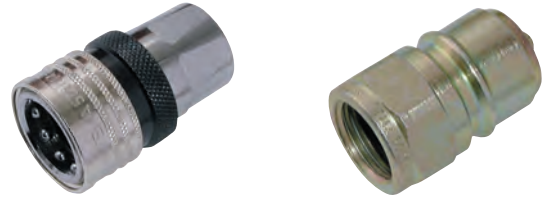
Plugs, BSPP

0071				Operation	£
TE-3820	3/8"	350	Nitrile	With valve	17.40
TE-3820 UV	3/8"	350	-	No valve	11.50
TE-3820 V	3/8"	350	Viton	With valve	21.25
TE-3820 RV	3/8"	300	Viton	With valve	80.05
TE-3820 RUV	3/8"	300	-	No valve	36.35

Plugs with Pressure Eliminator, BSPP

0071				Operation	£
TE-3821	3/8"	350	Nitrile	With valve	27.50
TE-3821 V	3/8"	350	Viton	With valve	19.30
TE-3821 RV	3/8"	300	Viton	With valve	100.15

T5000 Series



Couplings, BSPP

0071				Operation	£
TE-5010	1/2"	300	Nitrile	With valve	41.30
TE-5010 UV	1/2"	300	Nitrile	No valve	36.80
TE-5010 V	1/2"	300	Viton	With valve	49.40
TE-5010 RV	1/2"	300	Viton	With valve	227.50

Couplings with Pressure Eliminator, BSPP

0071				Operation	£
TE-5011	1/2"	300	Nitrile	With valve	52.70
TE-5011 V	1/2"	300	Viton	With valve	54.90
TE-5011 RV	1/2"	300	Viton	With valve	257.40

Plugs, BSPP

0071				Operation	£
TE-5020	1/2"	320	Nitrile	With valve	19.30
TE-5020 UV	1/2"	320	-	No valve	15.00
TE-5020 V	1/2"	320	Viton	With valve	23.30
TE-5020 RV	1/2"	300	Viton	With valve	86.35

Plugs with Pressure Eliminator, BSPP

0071				Operation	£
TE-5021	1/2"	320	Nitrile	With valve	31.90
TE-5021 V	1/2"	320	Viton	With valve	31.90
TE-5021 RV	1/2"	300	Viton	With valve	115.75

TEMA Coupling Letter Key

- NO Letter** = Standard, NBR seals with valve
- H** = No valve and no locking sleeve, NBR seals
- UV** = Standard NBR seals, unvalved
- HV** = No valve and no locking sleeve, viton seals
- V** = With valve and viton seals

- RV** = Stainless steel body with valve and viton seals
- RUV** = Stainless steel body, unvalved with viton seals
- VUV** = Unvalved with viton seals
- S** = Super nipple, special steel alloy construction, high durability