



Series 65, 66, 67 Safety-Lock Welding Couplings



Page Tech Sheet **10284**



Temperature Range:
-20°C to +100°C
Standard Seal NBR



Maximum Static Working Pressure:
PB 35 bar (500 PSI)



Single Shut Off

Interchangeability:
Rectus Design

Material:
Brass Body, Stainless Steel Balls and Spring

Application:
General Purpose Welding Industry Coupling.
Series 65 – Viton (Oxygen)
Series 66 – Acetylene (Acetylene)
Series 67 – Viton (Propane)



Actual Size

Section 3 – Pneumatic QRC

Hydraulics

Hydraulic QRC

Pneumatic QRC

Ind. Air Prep., Monitor & Test

KELM™ Pneumatics

Pneumatic & Vacuum Equipment

Valves

Ring Main Systems

Adaptors & Fittings

Stainless Steel

Malleable Iron

Hose, Tubing & Couplings

Clamps & Clips

Sprays & Adhesives

Blow Guns & Vacuum

Wash Down & Fuelling

Air Tools

Tools, Hardware & PPE

Couplings

Female Thread, BSPP



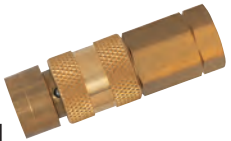
0194			Gas	£
65KSIW13MVX	1/4"	69.5	Oxygen	59.70
65KSIW17MVX	3/8"	69.5	Oxygen	59.70

Female Thread, BSPP, Left Hand



0194			Gas	£
66KSIL13MEX	1/4"	69.5	Acetylene	59.70
66KSIL17MEX	3/8"	69.5	Acetylene	59.70

Female Thread, BSPP, Left Hand



0194			Gas	£
67KSIL17MVX	3/8"	69.5	Propane	54.20

Hose Tail



0194			Gas	£
65KSTF06MVX	6mm (1/4")	90	Oxygen	60.50
65KSTF09MVX	9mm (3/8")	90	Oxygen	60.50

Hose Tail



0194			Gas	£
66KSTF06MEX	6mm (1/4")	90	Acetylene	60.50
66KSTF09MEX	9mm (3/8")	90	Acetylene	60.50

Hose Tail



0194			Gas	£
67KSTF06MVX	6mm (1/4")	90	Propane	60.50
67KSTF09MVX	9mm (3/8")	90	Propane	60.50

Plugs

Female Thread, BSPP



0194			Gas		£
65SSIW13MXX	1/4"	46	Oxygen	-	15.90
65SSIW17MXX	3/8"	46	Oxygen	-	17.30
66SSIL17MXX	3/8"	46	Acetylene	Left Hand	16.55
67SSIL17MXX	3/8"	46	Propane	Left Hand	15.90

Hose Tail



0194			Gas	£
65SSTF06MXX	6mm (1/4")	60	Oxygen	12.70
65SSTF09MXX	9mm (3/8")	60	Oxygen	12.70
66SSTF06MXX	6mm (1/4")	60	Acetylene	12.70
67SSTF06MXX	6mm (1/4")	60	Propane	16.70
67SSTF09MXX	9mm (3/8")	60	Propane	12.70

Other materials, seals and finishes available on request, please contact our technical department for further details.