



Air Line Couplings



Standard Air Line Couplings - "Airflow"



Male Thread, BSPT

7000		£
AC21CM02	1/4"	15.50
AC21EM02	3/8"	21.35
AC21JM02	1/2"	21.35



Female Thread, BSPP

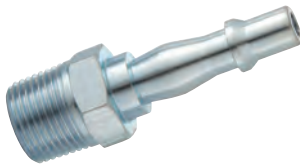
7000		£
AC21CF02	1/4"	15.35
AC21EF02	3/8"	21.35
AC21JF02	1/2"	21.35



Hose Tail

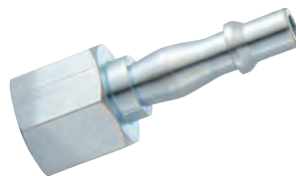
7000		£
AC21R02	6mm (1/4")	21.35
AC21S02	8mm (5/16")	21.35
AC21T02	10mm (3/8")	21.35

Standard & Vertex Air Line Adaptors



Male Thread, BSPT

7000		£
ACA2593	1/4"	2.60
ACA6909	3/8"	3.20
ACA6584	1/2"	8.00



Female Thread, BSPP

7000		£
ACA2746	1/4"	3.20
ACA6582	3/8"	11.95
ACA6583	1/2"	16.85



Hose Tail

7000		£
ACA1793	6mm (1/4")	2.60
ACA2487	8mm (5/16")	2.60
ACA2488	10mm (3/8")	2.60

Safety Couplings

- Creates a safe compressed air environment.
- Compatible with genuine PCL standard adaptors.
- Enhances workshop safety – prevents hose whip.
- Nominal bore: 4.8mm.
- Maximum flow rate: 43cfm @ 100lbf/in2.

- Maximum Working Pressure: 200lbf/in2 (14bar).
- Type: Dual Action.
- Approvals: Conforms to ISO 4414:1998 and EN 983:1996.
- Interchangeability: Rectus 19.



Male Thread, BSPT

7000		£
SC21CM	1/4"	19.15
SC21EM	3/8"	20.80
SC21JM	1/2"	22.45



Female Thread, BSPP

7000		£
SC21CF	1/4"	19.15
SC21EF	3/8"	22.45
SC21JF	1/2"	22.45

CONAH

For Hose Reels

see pages 1192-1199