

# Air Line Couplings



Page Tech Sheet **10663**

Section 3 – Pneumatic QRC

## XF Couplings

**Nominal Bore:** 7.40mm  
**Flow Rate @ 6 bar (0.5 Bar P.D.)** 2200 l/min

### Interchangeability:

Cejn 320  
 Legris 25/26  
 Norgren 234/238  
 Rectus 25/26  
 Schrader InterCheck 35



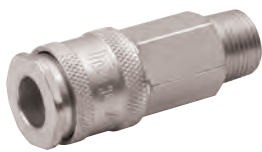
### Working Temperature:

-40°C to +100°C



### Maximum Working Pressure:

35 bar (508 psi)



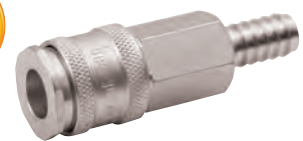
Male Thread, BSPT

7000		£
AC71CM	1/4"	16.25
AC71EM	3/8"	16.25
AC71JM	1/2"	16.25



Female Thread, BSPP

7000		£
AC71CF	1/4"	16.25
AC71EF	3/8"	16.25
AC71JF	1/2"	16.25



Hose Tail

7000	To Suit Hose I.D.	£
AC7106	6mm (1/4")	16.25
AC7108	8mm (5/16")	16.25
AC7109	9mm	16.25
AC7110	10mm (3/8")	16.25
AC7113	13mm (1/2")	16.25

## XF Plugs



Male Thread, BSPT

7000		£
AA7101	1/8"	3.70
AA7102	1/4"	3.70
AA7103	3/8"	4.20
AA7104	1/2"	7.85



Female Thread, BSPP

7000		£
AA7105	1/8"	3.70
AA7106	1/4"	3.70
AA7107	3/8"	4.20
AA7108	1/2"	7.85



Hose Tail

7000	To Suit Hose I.D.	£
AA7109	4mm	3.70
AA7110	6mm (1/4")	3.70
AA7111	8mm (5/16")	3.70
AA7114	9mm	3.70
AA7112	10mm (3/8")	3.70
AA7113	13mm (1/2")	3.70

## XF Safety Couplings



Male Thread, BSPP

7000		£
AS71CM	1/4"	40.30
AS71EM	3/8"	40.30
AS71JM	1/2"	40.30



Female Thread, BSPP

7000		£
AS71CF	1/4"	40.30
AS71EF	3/8"	40.30
AS71JF	1/2"	40.30

Tech Sheet 10664

Tech Sheet 10664