



# Air Preparation



Page Tech Sheet **3062**



**Temperature Rate:**  
-5°C to +60°C



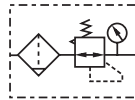
**Maximum Pressure:**  
10 bar

40 Micron fitted as standard  
Auto or Semi-Auto Drain fitted as standard  
Guarded Bowl Protection on Series 300 & 400

## 200 Series Filter/Regulators



Range 1.5 to 9.0 bar



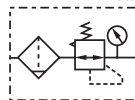
Semi-Auto Drains, supplied with Mounting Bracket & 10 bar Gauge, BSPP

Hydraulics	0338			£
Pneumatic QRC	KFRS200-06-F-3	1/8"	3000	44.30
	KFRS200-08-F-3	1/4"	3000	44.30

## 300 Series Filter/Regulators



Range 1.5 to 9.0 bar



Auto Drain, supplied with Mounting Bracket & 10 bar Gauge, BSPP

KELM™ Pneumatics	0338			£
Pneumatic & Vacuum Equipment	KFRS300-08-A-F-3*	1/4"	4000	96.50
	KFRS300-10-A-F-3*	3/8"	4000	96.50
	KFRS300-15-A-F-3*	1/2"	4000	96.50

Semi-Auto Drains, supplied with Mounting Bracket & 10 bar Gauge, BSPP

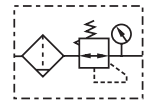
Valves	0338			£
Ring Main Systems	KFRS300-08-F-3*	1/4"	4000	69.50
	KFRS300-10-F-3*	3/8"	4000	69.50
	KFRS300-15-F-3*	1/2"	4000	69.50

\*now supplied in sleeved presentation boxes

## 400 Series Filter/Regulators



Range 1.5 to 9.0 bar



Auto Drain, supplied with Mounting Bracket & 10 bar Gauge, BSPP

Hydraulics	0338			£
Pneumatic QRC	KFRS400-10-A-F-3*	3/8"	6000	141.15
	KFRS400-15-A-F-3*	1/2"	6000	141.15

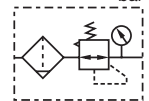
Semi-Auto Drains, supplied with Mounting Bracket & 10 bar Gauge, BSPP

KELM™ Pneumatics	0338			£
Pneumatic & Vacuum Equipment	KFRS400-10-F-3*	3/8"	6000	132.00
	KFRS400-15-F-3*	1/2"	6000	132.00

## 600 Series Filter/Regulators



Range 1.5 to 9.0 bar



Auto Drain, supplied with Mounting Bracket & 10 bar Gauge, BSPP

Hydraulics	0338			£
Pneumatic QRC	KFRS600-20-A-F-3*	3/4"	9000	272.85
	KFRS600-25-A-F-3*	1"	9000	272.85

Semi-Auto Drains, supplied with Mounting Bracket & 10 bar Gauge, BSPP

Valves	0338			£
Ring Main Systems	KFRS600-20-F-3*	3/4"	9000	267.40
	KFRS600-25-F-3*	1"	9000	267.40