



## Air Preparation



**Working Temperature:**  
-20°C to +70°C

**Maximum Working Pressure:**  
9 bar

Soft Start Valves are increasingly being used in systems where safety is key in the start up of machines & systems in helping protect the operators and the machines.

The valves allow the pressure to gradually increase to the full flow required on start up of the system.

OSHA approved.

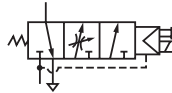
Lockable shut off valves prevent accidental start ups when maintenance or service work is being carried out on the machines.

Padlock supplied.

### 200 Series Soft Start Valve, Solenoid

Tech Sheet 3067

These units can be used in conjunction with KELM™ Air Preparation with the addition of brackets style 'U' or 'L', or as a stand alone in-line unit.



24V DC, supplied with Solenoid Coil, DIN Connector, Mounting Bracket & 10 bar Gauge, BSPP

0338



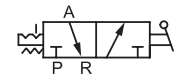
£

Hydraulics	KC200-06	1/8"	147.95
	KC200-08	1/4"	147.95

### 200 Series 3/2 Shut Off Valves, Lockable

Tech Sheet 3068

These units can be used in conjunction with KELM™ Air Preparation with the addition of brackets style 'U' or 'L', or as a stand alone 3/2 exhausting ball valve.



Supplied with Padlock & Mounting Bracket, BSPP

0338

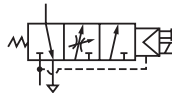


£

	KZ200-06	1/8"	50.90
	KZ200-08	1/4"	50.90

### 300 Series Soft Start Valve, Solenoid

Tech Sheet 3067



24V DC, supplied with Solenoid Coil, DIN Connector, Mounting Bracket & 10 bar Gauge, BSPP

0338

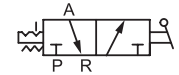


£

	KC300-08	1/4"	164.20
	KC300-10	3/8"	164.20
	KC300-15	1/2"	164.20

### 300 Series 3/2 Shut Off Valves, Lockable

Tech Sheet 3068



Supplied with Padlock & Mounting Bracket, BSPP

0338

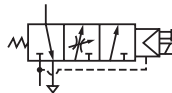


£

	KZ300-08	1/4"	65.40
	KZ300-10	3/8"	65.40
	KZ300-15	1/2"	65.40

### 400 Series Soft Start Valves, Solenoid

Tech Sheet 3067



24V DC, supplied with Solenoid Coil, DIN Connector, Mounting Bracket & 10 bar Gauge, BSPP

0338

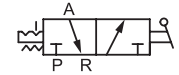


£

	KC400-10	3/8"	202.55
	KC400-15	1/2"	202.55

### 400 Series 3/2 Shut Off Valves, Lockable

Tech Sheet 3068



Supplied with Padlock & Mounting Bracket, BSPP

0338



£

	KZ400-10	3/8"	76.60
	KZ400-15	1/2"	76.60