



Air Preparation



Page Tech Sheet **3060**



Temperature Rate:
-5°C to +60°C

Maximum Pressure:
10 bar

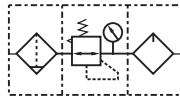
40 Micron fitted as standard
Auto or Semi-Auto Drain fitted as standard
Guarded Bowl Protection on Series 300 & 400

Section 5 – KELMK™ Pneumatics

200 Series Filter + Regulator + Lubricator Combination Units



Range 1.5 to 9.0 bar



Hydraulics

Hydraulic QRC

Semi-Auto Drains, supplied with Mounting Bracket & 10 bar Gauge, BSPP

Pneumatic QRC

0338			£
KCS200-06-F-3	1/8"	3000	105.35
KCS200-08-F-3	1/4"	3000	105.35

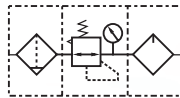
Ind. Air Prep, Monitor & Test

KELMK™ Pneumatics

300 Series Filter + Regulator + Lubricator Combination Units



Range 1.5 to 9.0 bar



Valves

Ring Main Systems

Adaptors & Fittings

Stainless Steel

Malleable Iron

Hose, Tubing & Couplings

Auto Drain, supplied with Mounting Bracket & 10 bar Gauge, BSPP

Clamps & Clips

0338			£
KCS300-08-A-F-3	1/4"	4000	187.05
KCS300-10-A-F-3	3/8"	4000	187.05
KCS300-15-A-F-3	1/2"	4000	187.05

Sprays & Adhesives

Blow Guns & Vacuum

Wash Down & Fuelling

Semi-Auto Drains, supplied with Mounting Bracket & 10 bar Gauge, BSPP

Air Tools

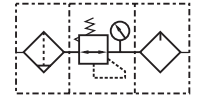
0338			£
KCS300-08-F-3	1/4"	4000	177.05
KCS300-10-F-3	3/8"	4000	177.05
KCS300-15-F-3	1/2"	4000	177.05

Tools, Hardware & PPE

400 Series Filter + Regulator + Lubricator Combination Units



Range 1.5 to 9.0 bar



Auto Drain, supplied with Mounting Bracket & 10 bar Gauge, BSPP

0338			£
KCS400-10-A-F-3	3/8"	6000	241.70
KCS400-15-A-F-3	1/2"	6000	241.70

Semi-Auto Drains, supplied with Mounting Bracket & 10 bar Gauge, BSPP

0338			£
KCS400-10-F-3	3/8"	6000	238.95
KCS400-15-F-3	1/2"	6000	238.95

600 Series Filter + Regulator + Lubricator Combination Units



Range 1.5 to 9.0 bar



Auto Drain, supplied with Mounting Bracket & 10 bar Gauge, BSPP

0338			£
KCS600-20-A-F-3	3/4"	9000	561.95
KCS600-25-A-F-3	1"	9000	561.95

Semi-Auto Drains, supplied with Mounting Bracket & 10 bar Gauge, BSPP

0338			£
KCS600-20-F-3	3/4"	9000	475.30
KCS600-25-F-3	1"	9000	475.30