



Pneumatic Cylinders

Section 5 – KELM™ Pneumatics

ISO6432 Mini Cylinders

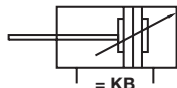
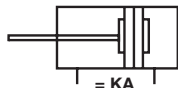
Working Temperature:
-20°C to +70°C

Operating Pressure:
1 to 10 bar

- Stainless Steel Piston Rod & Barrel as standard.

Medium:
Clean Compressed Air. Filtered (40µm) & Lubricated
Cushioning KA-Bumper, KB-Adjustable
Full technical specifications available on request

N.B. Bore sizes 32mm-40mm are available on a lead time. Please contact our sales office for details.



Tech Sheet 3001



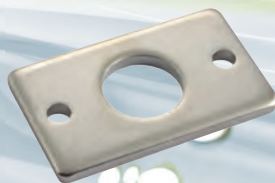
Magnetic Double Acting

0334	mm	mm	mm	Locknut	Rod Thread	£
KB-25X175-S-CA	25	175	1/8"	M22 x 1.5	M10 x 1.25	57.70
KB-25X200-S-CA	25	200	1/8"	M22 x 1.5	M10 x 1.25	60.85
KB-25X250-S-CA	25	250	1/8"	M22 x 1.5	M10 x 1.25	65.80
KB-25X300-S-CA	25	300	1/8"	M22 x 1.5	M10 x 1.25	69.95
KB-25X350-S-CA	25	350	1/8"	M22 x 1.5	M10 x 1.25	75.05
KB-25X400-S-CA	25	400	1/8"	M22 x 1.5	M10 x 1.25	83.10
KB-25X450-S-CA	25	450	1/8"	M22 x 1.5	M10 x 1.25	92.20
KB-25X500-S-CA	25	500	1/8"	M22 x 1.5	M10 x 1.25	94.55
KB-25X600-S-CA	25	600	1/8"	M22 x 1.5	M10 x 1.25	107.10
KB-32X10-S-CM	32	10	1/8"	M30 x 1.5	M10 x 1.25	78.10
KB-32X15-S-CM	32	15	1/8"	M30 x 1.5	M10 x 1.25	78.10
KB-32X20-S-CM	32	20	1/8"	M30 x 1.5	M10 x 1.25	78.10
KB-32X25-S-CM	32	25	1/8"	M30 x 1.5	M10 x 1.25	78.10
KB-32X30-S-CM	32	30	1/8"	M30 x 1.5	M10 x 1.25	82.45
KB-32X40-S-CM	32	40	1/8"	M30 x 1.5	M10 x 1.25	82.45
KB-32X50-S-CM	32	50	1/8"	M30 x 1.5	M10 x 1.25	82.45
KB-32X60-S-CM	32	60	1/8"	M30 x 1.5	M10 x 1.25	86.60
KB-32X75-S-CM	32	75	1/8"	M30 x 1.5	M10 x 1.25	86.60
KB-32X80-S-CM	32	80	1/8"	M30 x 1.5	M10 x 1.25	91.15
KB-32X100-S-CM	32	100	1/8"	M30 x 1.5	M10 x 1.25	91.15
KB-32X125-S-CM	32	125	1/8"	M30 x 1.5	M10 x 1.25	95.40
KB-32X150-S-CM	32	150	1/8"	M30 x 1.5	M10 x 1.25	99.60
KB-32X160-S-CM	32	160	1/8"	M30 x 1.5	M10 x 1.25	103.90
KB-32X175-S-CM	32	175	1/8"	M30 x 1.5	M10 x 1.25	103.90
KB-32X200-S-CM	32	200	1/8"	M30 x 1.5	M10 x 1.25	108.10
KB-32X250-S-CM	32	250	1/8"	M30 x 1.5	M10 x 1.25	116.60
KB-32X300-S-CM	32	300	1/8"	M30 x 1.5	M10 x 1.25	125.65
KB-32X350-S-CM	32	350	1/8"	M30 x 1.5	M10 x 1.25	134.30

0334	mm	mm	mm	Locknut	Rod Thread	£
KB-32X400-S-CM	32	400	1/8"	M30 x 1.5	M10 x 1.25	143.60
KB-32X450-S-CM	32	450	1/8"	M30 x 1.5	M10 x 1.25	152.85
KB-32X500-S-CM	32	500	1/8"	M30 x 1.5	M10 x 1.25	162.05
KB-32X600-S-CM	32	600	1/8"	M30 x 1.5	M10 x 1.25	180.05
KB-40X10-S-CM	40	10	1/4"	M38 x 1.5	M12 x 1.25	92.90
KB-40X15-S-CM	40	15	1/4"	M38 x 1.5	M12 x 1.25	92.90
KB-40X20-S-CM	40	20	1/4"	M38 x 1.5	M12 x 1.25	92.90
KB-40X25-S-CM	40	25	1/4"	M38 x 1.5	M12 x 1.25	92.90
KB-40X30-S-CM	40	30	1/4"	M38 x 1.5	M12 x 1.25	98.60
KB-40X40-S-CM	40	40	1/4"	M38 x 1.5	M12 x 1.25	98.60
KB-40X50-S-CM	40	50	1/4"	M38 x 1.5	M12 x 1.25	98.60
KB-40X60-S-CM	40	60	1/4"	M38 x 1.5	M12 x 1.25	104.10
KB-40X75-S-CM	40	75	1/4"	M38 x 1.5	M12 x 1.25	104.10
KB-40X80-S-CM	40	80	1/4"	M38 x 1.5	M12 x 1.25	109.90
KB-40X100-S-CM	40	100	1/4"	M38 x 1.5	M12 x 1.25	109.90
KB-40X125-S-CM	40	125	1/4"	M38 x 1.5	M12 x 1.25	115.35
KB-40X150-S-CM	40	150	1/4"	M38 x 1.5	M12 x 1.25	120.80
KB-40X160-S-CM	40	160	1/4"	M38 x 1.5	M12 x 1.25	126.60
KB-40X175-S-CM	40	175	1/4"	M38 x 1.5	M12 x 1.25	126.60
KB-40X200-S-CM	40	200	1/4"	M38 x 1.5	M12 x 1.25	132.10
KB-40X250-S-CM	40	250	1/4"	M38 x 1.5	M12 x 1.25	149.10
KB-40X300-S-CM	40	300	1/4"	M38 x 1.5	M12 x 1.25	160.60
KB-40X350-S-CM	40	350	1/4"	M38 x 1.5	M12 x 1.25	172.25
KB-40X400-S-CM	40	400	1/4"	M38 x 1.5	M12 x 1.25	184.05
KB-40X450-S-CM	40	450	1/4"	M38 x 1.5	M12 x 1.25	195.70
KB-40X500-S-CM	40	500	1/4"	M38 x 1.5	M12 x 1.25	207.95
KB-40X600-S-CM	40	600	1/4"	M38 x 1.5	M12 x 1.25	231.95

ISO6432 Mountings

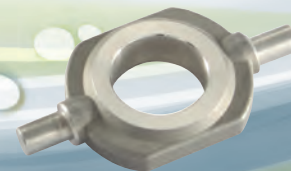
Tech Sheet 3002



Front Flange Mounting FA

0334	mm	£
F-KA8FA	8/10	1.85
F-KA12FA	12/16	1.85
F-KA20FA	20/25	3.10

Tech Sheet 3003



Front Trunnion Mounting TC

0334	mm	£
F-KA8TC	8/10	4.75
F-KA12TC	12/16	5.70
F-KA20TC	20/25	6.50
F-KA32TC	32	8.50
F-KA40TC	40	12.90