



# Manual & Mechanical Valves



Page Tech Sheet **3097**



**Operational Temperature:**  
-20°C to +70°C

**Working Pressure:**  
0 to 10 bar

**Medium:** Clean Compressed Air. Filtered (40µm)  
**Material:** Valve Body Aluminium Alloy **Seals:** NBR  
Full technical specifications available on request

## Panel Mount Valves, Manual & Mechanical 3/2 Way Valves



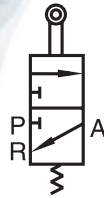
Basic Valve, Metric & BSPP

0335		
K3M3B-05	M5	25.35
K3M3B-06	1/8"	25.35
K3M3B-08	1/4"	32.40



One Way Roller Lever Valve, Metric & BSPP

0335		
K3M3L-05	M5	37.00
K3M3L-06	1/8"	37.00
K3M3L-08	1/4"	44.00



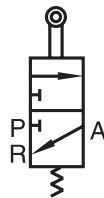
Roller Lever Valve, Metric & BSPP

0335		
K3M3R-05	M5	37.00
K3M3R-06	1/8"	37.00
K3M3R-08	1/4"	44.00



Lever/Lever, Metric & BSPP

0335		
K3M3Y-05	M5	41.50
K3M3Y-06	1/8"	41.50
K3M3Y-08	1/4"	48.55



Roller Valve, Metric & BSPP

0335		
K3M3V-05	M5	37.00
K3M3V-06	1/8"	37.00
K3M3V-08	1/4"	44.00

For Direct Drive  
& Belt driven  
Compressors  
see page 1445

- Hydraulics
- Hydraulic QRC
- Pneumatic QRC
- Ind. Air Prep., Monitor & Test
- KELM™ Pneumatics**
- Pneumatic & Vacuum Equipment
- Valves
- Ring Main Systems
- Adaptors & Fittings
- Stainless Steel
- Malleable Iron
- Hose, Tubing & Couplings
- Clamps & Clips
- Sprays & Adhesives
- Blow Guns & Vacuum
- Wash Down & Fuelling
- Air Tools
- Tools, Hardware & PPE