



Manual & Mechanical Valves



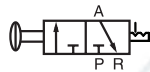
Operational Temperature:
-20°C to +70°C

Working Pressure:
0 to 8 bar

Medium: Clean Compressed Air. Filtered (40µm) & Lubricated
Material: Aluminium Alloy **Seals:** NBR
Full technical specifications available on request

Manual 3/2 Way Valves

Tech Sheet
3032



Push/Pull, BSPP

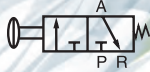
0335



£

CKL110-06	1/8"	41.80
CKL210-08	1/4"	57.25
CKL310-10	3/8"	81.35

Tech Sheet
3038



Push Button (Shrouded),
1/8" BSPP

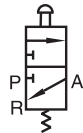
0335



£

KSCPF-06-B	Black	49.20
KSCPF-06-G	Green	49.20
KSCPF-06-R	Red	49.20

Tech Sheet
3038



Push Button (External),
1/8" BSPP

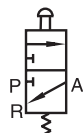
0335



£

KSCPP-06-B	Black	49.20
KSCPP-06-G	Green	49.20
KSCPP-06-R	Red	49.20

Tech Sheet
3038



Palm Button,
1/8" BSPP

0335



£

KSCPM-06-B	Black	49.20
KSCPM-06-G	Green	49.20
KSCPM-06-R	Red	49.20

Tech Sheet
3038



Palm Button, Latching, 1/8" BSPP

0335



£

KSCPL-06-R	Red	50.05
------------	-----	-------

Tech Sheet
3038



Lever/Lever, 1/8" BSPP

0335

£

KSY-06		50.05
--------	--	-------

Tech Sheet
3038



Switch, BSPP

0335



£

KSCHS-06-B	Black	52.95
KSCHS-06-G	Green	52.95
KSCHS-06-R	Red	52.95

Hydraulics

Hydraulic QRC

Pneumatic QRC

Ind. Air Prep., Monitor & Test

KELM™ Pneumatics

Pneumatic & Vacuum Equipment

Valves

Ring Main Systems

Adaptors & Fittings

Stainless Steel

Malleable Iron

Hose, Tubing & Couplings

Clamps & Clips

Sprays & Adhesives

Blow Guns & Vacuum

Wash Down & Fuelling

Air Tools

Tools, Hardware & PPE