



# Manual & Mechanical Valves



Section 5 - KELMK™ Pneumatics

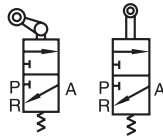


Working Temperature:  
-20°C to +70°C

## Mechanical 3/2 Way Valves

Tech Sheet  
3038

Maximum Working Pressure:  
0 to 8 bar



Roller, 1/8" BSPP

0335

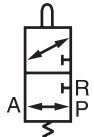


£

KSCL-06	One Way Roller Lever	49.20
KSCR-06	Roller Lever	49.20
KSCV-06	Roller	49.20

Tech Sheet  
10061

Maximum Working Pressure:  
0 to 10 bar



Antenna/Spring, BSPP

0335



£

ZMCP-06-W	1/8"	91.45
-----------	------	-------

Hydraulics

Hydraulic QRC

Pneumatic QRC

Ind. Air Prep, Monitor & Test

KELMK™ Pneumatics

Pneumatic & Vacuum Equipment

Valves

Ring Main Systems

Adaptors & Fittings

Stainless Steel

Malleable Iron

Hose, Tubing & Couplings

Clamps & Clips

Sprays & Adhesives

Blow Guns & Vacuum

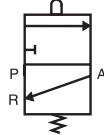
Wash Down & Fuelling

Air Tools

Tools, Hardware & PPE

Tech Sheet  
3038

Maximum Working Pressure:  
0 to 8 bar



Plunger, 1/8" BSPP

0335

£

KCB-06		38.50
--------	--	-------

Tech Sheet  
10061

Maximum Working Pressure:  
0 to 10 bar



Roller/Spring, BSPP

0335



£

ZMCR-06-W	1/8"	87.80
-----------	------	-------

Tech Sheet  
10061

Maximum Working Pressure:  
0 to 10 bar



Adjustable Roller/Spring, BSPP

0335



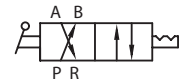
£

ZMCJ-06-W	1/8"	91.45
-----------	------	-------

## Manual 4/2 Way Valves

Tech Sheet  
3033

Maximum Working Pressure:  
0 to 10 bar



Lever/Lever, BSPP

0335



£

DKHV210-06-S	1/8"	77.05
DKHV310-08-S	1/4"	94.70
DKHV310-10-S	3/8"	94.70
DKHV410-15-S	1/2"	137.00
DKHV410-20-S	3/4"	137.00

## Manual 4/3 Way Valves

Tech Sheet  
3033

Maximum Working Pressure:  
0 to 10 bar



Lever/Lever/Lever (Fully Sealed Mid Position), BSPP

0335



£

DKHV230-C-06-S	1/8"	77.05
DKHV330-C-08-S	1/4"	94.70
DKHV330-C-10-S	3/8"	94.70
DKHV430-C-15-S	1/2"	137.00
DKHV430-C-20-S	3/4"	137.00