



Manual & Mechanical Valves



Working Temperature:
-20°C to +70°C

Manual 5/2 Way Valves

Tech Sheet
3034



Maximum Working Pressure:
0 to 8 bar



Push/Pull, BSPP

0335



£

DKL110-06	1/8"	54.10
DKL210-08	1/4"	63.15
DKL310-10	3/8"	89.90

Tech Sheet
3041



Maximum Working Pressure:
0 to 8 bar



Lever/Lever, BSPP

0335



£

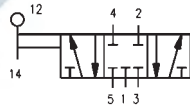
DKH210-06	1/8"	70.10
DKH310-08	1/4"	98.45
DKH310-10	3/8"	98.45

Manual 5/3 Way Valves

Tech Sheet
3045



Maximum Working Pressure:
0 to 8 bar



Lever/Lever/Lever,
Fully Sealed Mid
Position, BSPP

0335



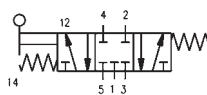
£

DKH230-C-06	1/8"	111.00
DKH230-C-08	1/4"	111.00
DKH330-C-10	3/8"	111.00

Tech Sheet
3046



Maximum Working Pressure:
0 to 8 bar



Lever/Spring/Lever,
Fully Sealed Mid
Position, BSPP

0335



£

DKHA230-C-06	1/8"	106.70
DKHA230-C-08	1/4"	106.70
DKHA330-C-10	3/8"	106.70

Tech Sheet
3055



Maximum Working Pressure:
0 to 8 bar



Foot/Spring, 1/4" BSPP

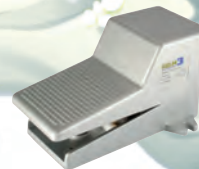
0335



£

DKF210-08	-	105.40
DKF210-08G	Guarded	126.30

Tech Sheet
3055



Maximum Working Pressure:
0 to 8 bar



Foot/Foot, 1/4" BSPP

0335



£

DKF210-08L	-	118.25
DKF210-08LG	Guarded	140.75

Flow Control Valves

Tech Sheet
3056



Maximum Working Pressure:
0.5 to 10 bar



Uni-directional, BSPP

0335



£

K100-06	1/8"	17.70
K200-08	1/4"	20.20
K300-10	3/8"	42.10
K300-15	1/2"	51.30

3/2 Hand Slide Valves

Tech Sheet
3035



Maximum Working Pressure:
10 bar



Hand Slide Valves,
BSPP

0335



£

KSV-06	1/8"	16.30
KSV-08	1/4"	18.45
KSV-10	3/8"	22.80
KSV-15	1/2"	26.90
KSV-20	3/4"	46.35
KSV-25	1"	67.40

Hydraulics

Hydraulic QRC

Pneumatic QRC

Ind. Air Prep., Monitor & Test

KELM™ Pneumatics

Pneumatic & Vacuum Equipment

Valves

Ring Main Systems

Adaptors & Fittings

Stainless Steel

Malleable Iron

Hose, Tubing & Couplings

Clamps & Clips

Sprays & Adhesives

Blow Guns & Vacuum

Wash Down & Fuelling

Air Tools

Tools, Hardware & PPE