



Specialist Valves



Working Temperature:
0°C to +60°C

Impulse Valves

Tech Sheet
3099



Maximum Working Pressure:
2 to 10 bar



Normally Open, 1/8" BSPP

0335

KP100014



69.25

Tech Sheet
3099



Maximum Working Pressure:
2 to 10 bar



Normally Closed, 1/8" BSPP

0335

KP100094



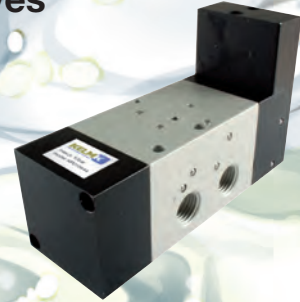
69.25

Oscillating Valves

Tech Sheet
3100



Maximum Working Pressure:
2 to 10 bar



Continuous Cycle, 1/4" BSPP

0335

KP010444



284.20

Tech Sheet
3100



Maximum Working Pressure:
2 to 10 bar



Pneumatically Piloted, 1/4" BSPP

0335

KP010464



304.50

Flip Flop Valve

Tech Sheet
3103



Maximum Working Pressure:
3 to 10 bar



Pneumatically Piloted, 1/4" BSPP

0335

KP100354



266.35

- Hydraulics
- Hydraulic QRC
- Pneumatic QRC
- Ind. Air Prep., Monitor & Test
- KELM™ Pneumatics**
- Pneumatic & Vacuum Equipment
- Valves
- Ring Main Systems
- Adaptors & Fittings
- Stainless Steel
- Malleable Iron
- Hose, Tubing & Couplings
- Clamps & Clips
- Sprays & Adhesives
- Blow Guns & Vacuum
- Wash Down & Fuelling
- Air Tools
- Tools, Hardware & PPE