



Silencers



Plastic Silencers

Body Material: POM
Inside Material: PE

Temperature Range:
0°C to +75°C

Working Pressure:
10 bar

Tech Sheet
823



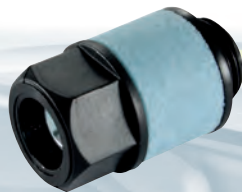
Granular, BSPP

	0423		£
Hydraulics	YPS-18	1/8"	1.20
	YPS-14	1/4"	1.70
Hydraulic QRC	YPS-38	3/8"	2.40
	YPS-12	1/2"	2.40
	YPS-34	3/4"	21.50
Pneumatic QRC	YPS-1	1"	24.75



Polyethylene, BSPP

	0423		£
Valves	PS-M5	M5	1.05
Adaptors & Fittings	PS-18	1/8"	1.35
	PS-14	1/4"	2.10
	PS-38	3/8"	4.45
Stainless Steel	PS-12	1/2"	4.65
	PS-34	3/4"	18.95



Restrictor Exhaust Port Regulator & Silencer Combined, BSPP

	0423		£
Air Tools	RS-18	1/8"	4.45
	RS-14	1/4"	4.05
Tools, Hardware & PPE	RS-38	3/8"	5.20
	RS-12	1/2"	13.35



Metric Push-in

	0423		£
	S03STPI-6	6	4.40
	S03WBPI-8	8	5.75
	S04STPI-10	10	6.45
	S05STPI-12	12	8.45



Acetal Resin with Plastic Soundproofing, Male Thread, BSPP

	0423		£
	7070-1/8	1/8"	4.15
	7070-1/4	1/4"	4.85
	7070-3/8	3/8"	9.80
	7070-1/2	1/2"	9.80
	7070-3/4	3/4"	38.05
	7070-1	1"	36.05



Nylon with Felt Soundproofing, Male Thread, BSPP

	0423		£
	7080-1/8	1/8"	4.15
	7080-1/4	1/4"	4.85
	7080-3/8	3/8"	9.80
	7080-1/2	1/2"	9.80
	7080-3/4	3/4"	38.05
	7080-1	1"	37.15

Steel Silencers



Single Ported, BSPP

	0423		£
	SLS050	1/2"	64.80
	SLS075	3/4"	68.35
	SLS100	1"	70.60
	SLS125	1.1/4"	69.80
	SLS150	1.1/2"	73.65
	SLS200	2"	80.20
	SLS250	2.1/2"	153.30



Double Ported, BSPP

	0423		£
	SLD050	1/2"	68.60
	SLD075	3/4"	75.05
	SLD150	1.1/2"	101.60
	SLD200	2"	109.10

Hydraulics

Hydraulic QRC

Pneumatic QRC

Ind. Air Prep., Monitor & Test

KELM™ Pneumatics

Pneumatic & Vacuum Equipment

Valves

Ring Main Systems

Adaptors & Fittings

Stainless Steel

Malleable Iron

Hose, Tubing & Couplings

Clamps & Clips

Sprays & Adhesives

Blow Guns & Vacuum

Wash Down & Fuelling

Air Tools

Tools, Hardware & PPE