



Shock Absorbers & Accessories



Page Tech Sheet 62

Operational Temperature:
-10°C to +80°C

Technical Information:
• Increase production rates
• Extend machine life
• Reduce construction costs

• Reduce maintenance and noise pollution
• Sizes available from 6mm diameter up to 230mm diameter
• Complete with cap

Full technical specifications available on request

Shock Absorbers



Self-compensating High Impact Speed

0269	mm	Max. Energy Absorbed Nm.	Mounting Thread	£
AC-0806-1	6	2	M8 x 1.0	22.80
AC-1005-1	5	3	M10 x 1.0	22.80
AC-1008-1	8	4	M10 x 1.0	24.30
AC-1210-1	10	5	M12 x 1.0	29.40
AC-1412-1	12	15	M14 x 1.5	38.20
AC-1416-1	16	20	M14 x 1.5	38.20
AC-2020-1	20	40	M20 x 1.5	49.85
AC-2050-1	50	60	M20 x 1.5	65.10
AC-2525-1	25	80	M25 x 1.5	60.90
AC-2540-1	40	120	M25 x 1.5	66.45

Self-compensating Medium Impact Speed

0269	mm	Max. Energy Absorbed Nm.	Mounting Thread	£
AC-0806-2	6	2	M8 x 1.0	22.80
AC-1005-2	5	3	M10 x 1.0	22.80
AC-1008-2	8	4	M10 x 1.0	24.30
AC-1210-2	10	5	M12 x 1.0	29.40
AC-1412-2	12	15	M14 x 1.5	38.20
AC-1416-2	16	20	M14 x 1.5	38.20
AC-2020-2	20	40	M20 x 1.5	49.85
AC-2050-2	50	60	M20 x 1.5	65.10
AC-2525-2	25	80	M25 x 1.5	64.15
AC-2540-2	40	120	M25 x 1.5	66.45

Self-compensating Low Impact Speed

0269	mm	Max. Energy Absorbed Nm.	Mounting Thread	£
AC-0806-3	6	2	M8 x 1.0	22.80
AC-1005-3	5	3	M10 x 1.0	22.80
AC-1008-3	8	4	M10 x 1.0	22.80
AC-1210-3	10	5	M12 x 1.0	29.40
AC-2020-3	20	40	M20 x 1.5	49.85
AC-2050-3	50	60	M20 x 1.5	65.10
AC-2525-3	25	80	M25 x 1.5	60.90
AC-2540-3	40	120	M25 x 1.5	66.45
AC-3660-3	60	250	M36 x 1.5	111.25

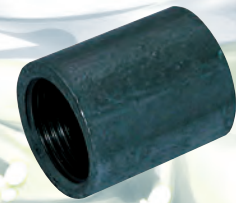


Adjustable

0269	mm	Max. Energy Absorbed Nm.	Mounting Thread	£
AD-1410	10	20	M14 x 1.5	43.25
AD-0216	16	25	M20 x 1.5	55.35
AD-2525	25	85	M25 x 1.5	79.60
AD-2540	40	100	M25 x 1.5	72.00
AD-3650	50	300	M36 x 1.5	126.05
AD-4225	25	260	M42 x 1.5	183.45
AD-4250	50	500	M42 x 1.5	214.55
AD-4275	75	750	M42 x 1.5	228.45
AD-64050	50	12000	2.1/2" UNF	448.45
AD-64100	100	24000	2.1/2" UNF	468.20
AD-64150	150	36000	2.1/2" UNF	484.25

Accessories

• To aid with precise end positioning.
Full technical specifications available on request



Stop Collars

0269	mm	£
2120-7352	M8 x 1.0	2.20
2120-7360	M10 x 1.0	2.70
2120-7386	M14 x 1.5	3.60
2120-7394	M20 x 1.5	4.70
2120-7402	M25 x 1.5	6.90
2120-7428	M36 x 1.5	19.35



For FTM® Malleable Iron Fittings
see page 1061



- Hydraulics
- Hydraulic QRC
- Pneumatic QRC
- Ind. Air Prep., Monitor & Test
- KELM™ Pneumatics
- Pneumatic & Vacuum Equipment
- Valves
- Ring Main Systems
- Adaptors & Fittings
- Stainless Steel
- Malleable Iron
- Hose, Tubing & Couplings
- Clamps & Clips
- Sprays & Adhesives
- Blow Guns & Vacuum
- Wash Down & Fuelling
- Air Tools
- Tools, Hardware & PPE