



Directional Control Valves



Tech Sheet 10313

Solenoid Coils for Electro Pneumatically Operated Valves

• Solenoid DIN Connector use Form B.



U70 Solenoid Coils

| | | |
|------|--------------------|-------|
| 0158 | | |
| U7H | 24V 50/60Hz 3.5VA | 14.20 |
| U7K | 110V 50/60Hz 3.5VA | 14.20 |
| U7J | 240V 50/60Hz 4VA | 14.20 |
| U77 | 24V DC 3W | 14.20 |
| U71 | 6V DC 5W | 14.20 |
| U72 | 12V DC 5W | 14.20 |
| U73 | 24V DC 5W | 14.20 |
| U74 | 48V DC 5W | 14.20 |
| U76 | 110V DC 5W | 14.20 |

• Solenoid DIN Connector use Form B.



G70 Solenoid Coils

| | | |
|------|--------------------|-------|
| 0158 | | |
| G7H | 24V 50/60Hz 3.5VA | 12.25 |
| G7K | 110V 50/60Hz 3.5VA | 12.25 |
| G7J | 240V 50/60Hz 4VA | 12.25 |
| G79 | 48V DC 3W | 12.25 |
| G77 | 24V DC 3W | 12.25 |
| G72 | 12V DC 5W | 12.25 |
| G73 | 24V DC 5W | 12.25 |
| G76 | 110V DC 4W | 12.25 |

• Solenoid DIN Connector use Form A.



A80 Solenoid Coils

| | | |
|------|------------------|-------|
| 0158 | | |
| A8B | 24V 50/60Hz 5VA | 21.05 |
| A8D | 110V 50/60Hz 5VA | 21.05 |
| A8E | 220V 50/60Hz 5VA | 21.05 |
| A83 | 24V DC 4W | 21.05 |
| A84 | 48V DC 4W | 21.05 |
| A86 | 110V DC 4W | 21.05 |

• Solenoid DIN Connector use Form B.



G80 Solenoid Coils

| | | |
|------|----------|-------|
| 0158 | | |
| G93 | 24V Coil | 47.10 |

Solenoid DIN Connectors



Black Connectors

| | | |
|------------|-------------------------|------|
| 0158 | | |
| KA132000B9 | Form A 18mm Pin Spacing | 1.80 |
| KB132000B9 | Form B 11mm Pin Spacing | 1.80 |



Grey Connector

| | | |
|------------|-------------------------|------|
| 0158 | | |
| KA132000A9 | Form A 18mm Pin Spacing | 1.80 |

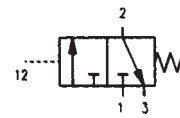


Transparent Connectors

| | | |
|------------|-------------------------------|------|
| 0158 | | |
| KA132V54T9 | Form A 18mm Pin Spacing, 24V | 9.75 |
| KA132V55T9 | Form A 18mm Pin Spacing, 115V | 9.75 |
| KA132V56T9 | Form A 18mm Pin Spacing, 230V | 9.75 |
| KB132V54T9 | Form B 11mm Pin Spacing, 24V | 9.75 |
| KB132V55T9 | Form B 11mm Pin Spacing, 115V | 9.75 |
| KB132V56T9 | Form B 11mm Pin Spacing, 230V | 9.75 |

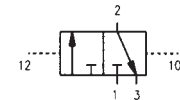
Tech Sheet 1847

Series 3, In-line Pneumatically Operated Valves



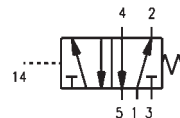
3/2 Pneumatic/Spring N/C

| | | |
|----------|-------|-------|
| 0158 | | |
| 338 035 | G1/8" | 33.35 |
| 338L 035 | G1/8" | 33.35 |
| 334 035 | G1/4" | 56.30 |



3/2 Pneumatic/Pneumatic Bistable

| | | |
|----------|-------|-------|
| 0158 | | |
| 338 033 | G1/8" | 37.00 |
| 338L 033 | G1/8" | 37.00 |
| 334 033 | G1/4" | 56.30 |



Series 3, 5/2 Pneumatic/Spring Monostable

| | | |
|---------|-------|-------|
| 0158 | | |
| 358 035 | G1/8" | 35.20 |
| 354 035 | G1/4" | 59.75 |

- Hydraulics
- Hydraulic QRC
- Pneumatic QRC
- Ind. Air Prep., Monitor & Test
- KELM™ Pneumatics
- Pneumatic & Vacuum Equipment
- Valves
- Ring Main Systems
- Adaptors & Fittings
- Stainless Steel
- Malleable Iron
- Hose, Tubing & Couplings
- Clamps & Clips
- Sprays & Adhesives
- Blow Guns & Vacuum
- Wash Down & Fuelling
- Air Tools
- Tools, Hardware & PPE