



Directional Control Valves

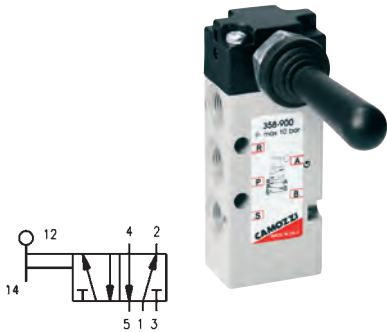


Page Tech Sheet 10309

Series 3, 4 & VMS Manually Operated Valves

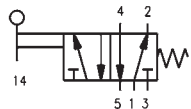
Section 6 – Pneumatic & Vacuum Equipment

- Hydraulics
- Hydraulic QRC
- Pneumatic QRC
- Ind. Air Prep., Monitor & Test
- KELM™ Pneumatics
- Pneumatic & Vacuum Equipment
- Valves
- Ring Main Systems
- Adaptors & Fittings
- Stainless Steel
- Malleable Iron
- Hose, Tubing & Couplings
- Clamps & Clips
- Sprays & Adhesives
- Blow Guns & Vacuum
- Wash Down & Fuelling
- Air Tools
- Tools, Hardware & PPE



G1/8", 5/2 Lever Valve Bistable

0158 £ 358 900 G1/8" 40.90



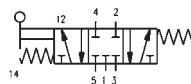
G1/8", 5/2 Lever Valve Monostable

0158 £ 358 905 G1/8" 42.60



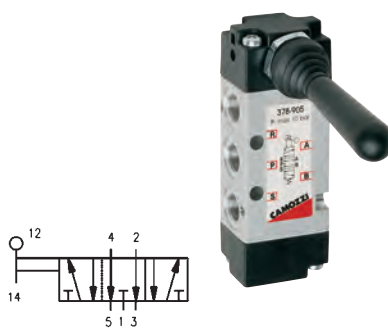
G1/8", 5/3 CC Lever Valve Bistable

0158 £ 368 900 G1/8" 47.45



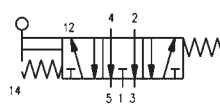
G1/8", 5/3 CC Lever Valve Monostable

0158 £ 368 905 G1/8" 53.15



G1/8", 5/3 CO Lever Valve Bistable

0158 £ 378 900 G1/8" 47.45



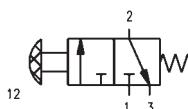
G1/8", 5/3 CO Lever Valve Monostable

0158 £ 378 905 G1/8" 53.15



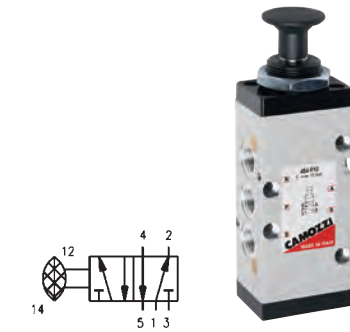
G1/4", 3/2 Push/Pull Knob Bistable

0158 £ 434 910 G1/4" 51.05



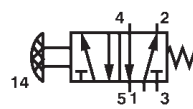
G1/4", 3/2 Push Knob Monostable

0158 £ 434 915 G1/4" 51.05



G1/4", 5/2 Push/Pull Knob Bistable

0158 £ 454 910 G1/4" 55.15



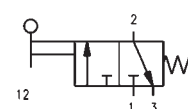
G1/4", 5/2 Push Knob Monostable

0158 £ 454 915 G1/4" 55.15



G1/4", 3/2 Lever Bistable

0158 £ 434 900 G1/4" 63.00



G1/4", 3/2 Lever Monostable

0158 £ 434 905 G1/4" 63.00