



## Super X Actuated In-line



Page Tech Sheet **10582**

### Mechanically & Manually

- Wide range of operators
- Suitable for multi-directional flow and dual supply applications
- High flow capacity
- Lightweight corrosion resistant materials

**Medium:**  
Compressed Air, Filtered, Lubricated and Non-lubricated

| Flow: | Size | l/min |
|-------|------|-------|
|       | G1/8 | 335   |
|       | G1/4 | 965   |

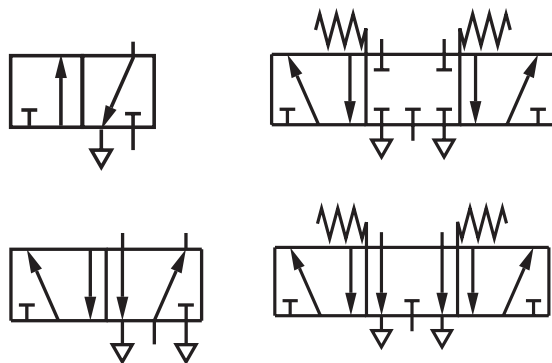
**Body:**  
Die-cast Aluminium Alloy

**End Cover:**  
Aluminium or Glass Filled Nylon

**Seals:**  
Nitrile Rubber

**Ambient Temperature:**  
0°C to +70°C

**Operating Pressure:**  
Maximum 10 bar



### Mechanical

|  | 0036     |      | Function | Actuation                        | £      |
|--|----------|------|----------|----------------------------------|--------|
|  | 03040002 | G1/8 | 3/2      | Plunger/Spring                   | 45.30  |
|  | 03040202 | G1/8 | 3/2      | Roller/Spring                    | 51.90  |
|  | 03029302 | G1/8 | 3/2      | Roller Lever (Heavy Duty)/Spring | 87.30  |
|  | 03029402 | G1/8 | 3/2      | One Way Trip (Heavy Duty)/Spring | 126.80 |
|  | 03043202 | G1/8 | 3/2      | Antenna Valve                    | 93.25  |
|  | X3044002 | G1/8 | 5/2      | Plunger/Spring                   | 58.45  |
|  | X3045102 | G1/8 | 5/2      | Roller Lever/Spring              | 85.70  |
|  | X3039302 | G1/8 | 5/2      | Roller Lever (Heavy Duty)/Spring | 100.60 |
|  | X3046302 | G1/8 | 5/2      | Sensitive Roller Lever/Spring    | 136.70 |
|  | X3047202 | G1/8 | 5/2      | Antenna/Spring                   | 107.90 |
|  | 03060002 | G1/4 | 3/2      | Plunger/Spring                   | 88.60  |
|  | 03060202 | G1/4 | 3/2      | Roller/Spring                    | 87.95  |
|  | 03061102 | G1/4 | 3/2      | Roller Lever/Spring              | 114.60 |
|  | X3064002 | G1/4 | 5/2      | Plunger/Spring                   | 103.20 |
|  | X3064202 | G1/4 | 5/2      | Roller/Spring                    | 99.70  |
|  | X3065102 | G1/4 | 5/2      | Roller Lever/Spring              | 126.00 |

### Manual

| 0036     |      | Function | Actuation                |       | £      |
|----------|------|----------|--------------------------|-------|--------|
| 03040402 | G1/8 | 3/2      | Button/Spring            | Black | 52.30  |
| 03040502 | G1/8 | 3/2      | Button/Spring            | Green | 53.20  |
| 03040602 | G1/8 | 3/2      | Button/Spring            | Red   | 52.30  |
| 03036602 | G1/8 | 3/2      | Button Palm/Spring       | Red   | 91.90  |
| 03036702 | G1/8 | 3/2      | Button Palm/Spring       | Green | 91.90  |
| 03036802 | G1/8 | 3/2      | Button Palm/Spring       | Black | 91.90  |
| 03041402 | G1/8 | 3/2      | Button (Shrouded)/Spring | Black | 69.30  |
| 03041502 | G1/8 | 3/2      | Button (Shrouded)/Spring | Green | 68.25  |
| 03041602 | G1/8 | 3/2      | Button (Shrouded)/Spring | Red   | 69.30  |
| 03040802 | G1/8 | 3/2      | Button/Pilot             | Black | 67.65  |
| 03043802 | G1/8 | 3/2      | Lever/Spring             | Black | 89.00  |
| 03042602 | G1/8 | 3/2      | Lever Knob/Spring        | Black | 81.15  |
| 03043702 | G1/8 | 3/2      | Lever/Lever              | Black | 87.65  |
| 03040302 | G1/8 | 3/2      | Toggle/Toggle            | Black | 54.85  |
| 03042502 | G1/8 | 3/2      | Knob/Knob                | Black | 45.90  |
| X3045502 | G1/8 | 5/2      | Button (Shrouded)/Spring | Green | 82.05  |
| X3044802 | G1/8 | 5/2      | Button/Pilot             | Black | 82.60  |
| X3046502 | G1/8 | 5/2      | Knob, Push/Knob, Pull    | Black | 67.65  |
| X3047802 | G1/8 | 5/2      | Lever/Spring             | Black | 93.70  |
| X3044302 | G1/8 | 5/2      | Toggle/Toggle            | Black | 66.20  |
| X3047702 | G1/8 | 5/2      | Lever/Lever              | Black | 92.25  |
| X3046402 | G1/8 | 5/2      | Knob/Knob or Pilot       | Black | 78.50  |
| X3048202 | G1/8 | 5/2      | Pedal/Spring             | Black | 121.30 |
| X3048402 | G1/8 | 5/2      | Pedal/Pedal              | Black | 140.55 |
| X3343802 | G1/8 | 5/3      | Lever/Spring/Lever       | Black | 119.75 |
| X3347802 | G1/8 | 5/3      | Lever/Spring/Lever       | Black | 117.95 |
| X3343702 | G1/8 | 5/3      | Lever/Lever/Lever        | Black | 122.15 |
| 03060402 | G1/4 | 3/2      | Button/Spring            | Black | 93.50  |
| 03063802 | G1/4 | 3/2      | Lever/Spring             | Black | 110.65 |
| 03063702 | G1/4 | 3/2      | Lever/Lever              | Black | 112.90 |
| 03062502 | G1/4 | 3/2      | Knob/Knob                | Black | 95.50  |
| X3064402 | G1/4 | 5/2      | Button/Spring            | Black | 105.50 |
| X3067802 | G1/4 | 5/2      | Lever/Spring             | Black | 119.75 |
| X3067702 | G1/4 | 5/2      | Lever/Lever              | Black | 120.45 |
| X3066502 | G1/4 | 5/2      | Knob/Knob                | Black | 107.15 |
| X3068202 | G1/4 | 5/2      | Pedal/Spring             | Black | 161.15 |
| X3068402 | G1/4 | 5/2      | Pedal/Pedal              | Black | 164.75 |
| X3363802 | G1/4 | 5/3      | Lever/Spring/Lever       | Black | 147.35 |
| X3367802 | G1/4 | 5/3      | Lever/Spring/Lever       | Black | 147.35 |
| X3363702 | G1/4 | 5/3      | Lever/Lever/Lever        | Black | 149.85 |