



Ball Valves

Tech Sheet 1763

Red T Handle

Temperature Range: -10°C to +60°C

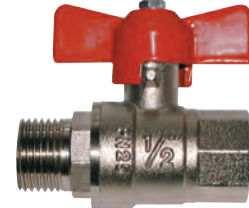
Working Pressure: 25 bar

- Full Bore
- Long Thread
- Seal Material PTFE



Female x Female, BSPP

0109		£
2024-1915	1/4"	8.00
2024-1923	3/8"	8.00
2024-1949	1/2"	8.90
2024-1964	3/4"	13.00
2024-1980	1"	18.60



Male x Female, BSPP

0109		£
2024-2079	1/4"	8.00
2024-2087	3/8"	8.00
2024-2095	1/2"	8.90
2024-2103	3/4"	13.00
2024-2111	1"	18.70

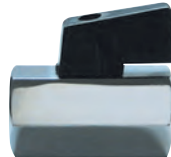
Tech Sheet 834

Mini Ball Valves, Brass

Temperature Range: -15°C to +100°C

Working Pressure: 120 psi (8 bar)

- Polished Chrome Finish
- Seal Material PTFE



Type MBV, Female x Female, Black Lever Handle, BSPP

0090		£
MBV18S	1/8"	5.45
MBV14S	1/4"	6.00
MBV38S	3/8"	5.65
MBV12S	1/2"	8.50
MBV34S	3/4"	12.50



Type MBV, Female x Female, Red Lever Handle, BSPP

0090		£
MBV18	1/8"	5.45
MBV14	1/4"	6.00
MBV38	3/8"	5.65
MBV12	1/2"	8.50
MBV34	3/4"	12.50



Type MBVM, Male x Female, Black Lever Handle, BSPP

0090		£
MBVM18S	1/8"	5.25
MBVM14S	1/4"	5.25
MBVM38S	3/8"	5.55
MBVM12S	1/2"	7.70
MBVM34S	3/4"	9.70



Type MBVM, Male x Female, Red Lever Handle, BSPP

0090		£
MBVM18	1/8"	5.25
MBVM14	1/4"	5.25
MBVM38	3/8"	5.55
MBVM12	1/2"	7.70
MBVM34	3/4"	9.70