



Butterfly Wafer Pattern Valves

HUK valves

Cast Iron Body, Stainless Steel Disc, EPDM Liner

Suitable for Flanges: BS10 Table E, PN10/16, ANSI150.

Temperature Range:
-30°C to +130°C



Tech Sheet
14

Lever Operated

0030	Flange Size	£
LEVER/40SSEP	1.1/2"	63.70
LEVER/50SSEP	2"	64.80
LEVER/65SSEP	2.1/2"	67.10
LEVER/80SSEP	3"	76.55
LEVER/100SSEP	4"	102.35
LEVER/125SSEP	5"	154.10
LEVER/150SSEP	6"	184.70
LEVER/200SSEP	8"	297.00
LEVER/250SSEP	10"	497.15

Suitable for Flanges: BS10 Table E, PN10/16, ANSI150.

Temperature Range:
-30°C to +130°C



Tech Sheet
14

Gear Operated

0030	Flange Size	£
GEAR/50SSEP	2"	127.10
GEAR/65SSEP	2.1/2"	139.70
GEAR/80SSEP	3"	148.30
GEAR/100SSEP	4"	180.20
GEAR/125SSEP	5"	223.30
GEAR/150SSEP	6"	279.10
GEAR/200SSEP	8"	467.25
GEAR/250SSEP	10"	694.90
GEAR/300SSEP	12"	987.00
GEAR/350SSEP	14"	1303.50
GEAR/400SSEP	16"	2326.50

Suitable for Flanges: BS10 Table E, PN10/16, ANSI150.

Temperature Range:
-30°C to +130°C



Tech Sheet
15

Pneumatic Single Acting

0030	Flange Size	£
SA/50SSEP	2"	494.80
SA/65SSEP	2.1/2"	550.10
SA/80SSEP	3"	668.30
SA/100SSEP	4"	761.90
SA/125SSEP	5"	1089.40
SA/150SSEP	6"	1556.35
SA/200SSEP	8"	3084.55
SA/250SSEP	10"	3210.00
SA/300SSEP	12"	6001.25

Suitable for Flanges: BS10 Table E, PN10/16, ANSI150.

Temperature Range:
-30°C to +130°C

Tech Sheet
16

Pneumatic Double Acting

0030	Flange Size	£
DA/50SSEP	2"	247.95
DA/65SSEP	2.1/2"	314.40
DA/80SSEP	3"	320.90
DA/100SSEP	4"	381.00
DA/125SSEP	5"	479.10
DA/150SSEP	6"	537.95
DA/200SSEP	8"	779.20
DA/250SSEP	10"	1109.90
DA/300SSEP	12"	2278.60

Electric Actuator Safe Area 85 - 240V AC or DC single Phase (10" and 12" 230V AC Only).
Suitable for Flanges: PN16 (ANSI150 on request).

Temperature Range:
-30°C to +130°C



Tech Sheet
17

Electric Actuated, High Voltage

0030	Flange Size	£
E/50SSEP-HV	2"	494.35
E/65SSEP-HV	2.1/2"	602.80
E/80SSEP-HV	3"	774.30
E/100SSEP-HV	4"	1021.65
E/125SSEP-HV	5"	1456.90
E/150SSEP-HV	6"	1466.70
E/200SSEP-HV	8"	1696.60
E/250SSEP-HV	10"	2895.95
E/300SSEP-HV	12"	4425.75

Suitable for Flanges: BS10 Table E, PN10/16, ANSI150.

Temperature Range:
-30°C to +130°C

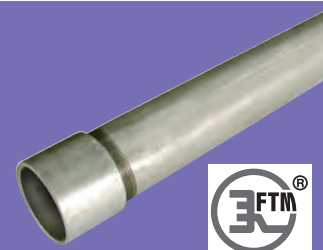
Tech Sheet
17

Electric Actuated, Low Voltage

0030	Flange Size	£
E/50SSEP-LV	2"	494.35
E/65SSEP-LV	2.1/2"	602.80
E/80SSEP-LV	3"	774.30
E/100SSEP-LV	4"	1021.65
E/125SSEP-LV	5"	1456.90
E/150SSEP-LV	6"	1466.70
E/200SSEP-LV	8"	1696.60

For Galvanised Tubing

see page 1071



Hydraulics

Hydraulic QRC

Pneumatic QRC

Ind. Air Prep., Monitor & Test

KELM™ Pneumatics

Pneumatic & Vacuum Equipment

Valves

Ring Main Systems

Adaptors & Fittings

Stainless Steel

Malleable Iron

Hose, Tubing & Couplings

Clamps & Clips

Sprays & Adhesives

Blow Guns & Vacuum

Wash Down & Fuelling

Air Tools

Tools, Hardware & PPE