

UPVC Metric Pipe System



Page Tech Sheet **10256**

Industrial Valves

Working Temperature: PVC-U Systems should never be used for temperatures in excess of 60°C

Maximum Working Pressure:
16 bar Plain ends
12 bar Threaded ends up to 63mm.
10 bar 75mm-110mm



Double Union Ball Valve, EPDM Seals

1050	ID (mm)	£
DUBV-16-UPVC	16	69.15
DUBV-20-UPVC	20	69.15
DUBV-25-UPVC	25	82.20
DUBV-32-UPVC	32	98.75
DUBV-40-UPVC	40	125.25
DUBV-50-UPVC	50	164.15
DUBV-63-UPVC	63	206.80
DUBV-75-UPVC	75	433.80
DUBV-90-UPVC	90	496.30
DUBV-110-UPVC	110	689.45



Double Union Check Valve, EPDM Seals

1050	ID (mm)	£
DUCV-16-UPVC	16	58.30
DUCV-20-UPVC	20	60.10
DUCV-25-UPVC	25	66.80
DUCV-32-UPVC	32	71.90
DUCV-40-UPVC	40	86.80
DUCV-50-UPVC	50	105.70
DUCV-63-UPVC	63	151.70
DUCV-75-UPVC	75	365.15
DUCV-90-UPVC	90	405.30
DUCV-110-UPVC	110	688.95



Double Union Foot Valve, EPDM Seals

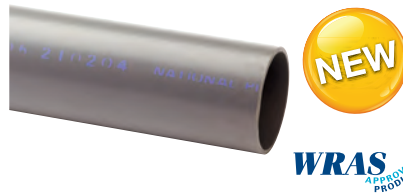
1050	ID (mm)	£
DUFV-20-UPVC	20	52.10
DUFV-25-UPVC	25	63.35
DUFV-32-UPVC	32	70.40
DUFV-40-UPVC	40	81.55
DUFV-50-UPVC	50	114.30
DUFV-63-UPVC	63	159.45
DUFV-75-UPVC	75	364.60
DUFV-90-UPVC	90	481.10
DUFV-110-UPVC	110	505.20

UPVC Tubing

Working Temperature: All pressures quoted are based on a working temperature of 20°C

PVC-U Systems should never be used for temperatures in excess of 60°C

Maximum Working Pressure:
16 bar



PN16, 6 Metre Lengths

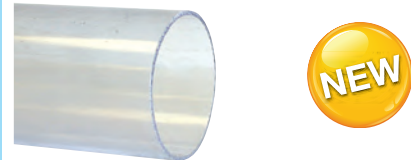
0118	OD (mm)	£
UPVC/TUBE-6-16	16	6.70
UPVC/TUBE-6-20	20	6.75
UPVC/TUBE-6-25	25	10.45
UPVC/TUBE-6-32	32	16.50
UPVC/TUBE-6-40	40	25.60
UPVC/TUBE-6-50	50	39.45
UPVC/TUBE-6-63	63	51.80
UPVC/TUBE-6-75	75	73.45
UPVC/TUBE-6-90	90	105.30
UPVC/TUBE-6-110	110	156.25
UPVC/TUBE-6-140	140	321.30
UPVC/TUBE-6-160	160	326.00
UPVC/TUBE-6-225	225	749.95

PN16, 3 Metre Lengths

0118	OD (mm)	£
UPVC/TUBE-3-16	16	3.85
UPVC/TUBE-3-20	20	3.85
UPVC/TUBE-3-25	25	6.00
UPVC/TUBE-3-32	32	9.50
UPVC/TUBE-3-40	40	14.70
UPVC/TUBE-3-50	50	22.70
UPVC/TUBE-3-63	63	29.75
UPVC/TUBE-3-75	75	42.20
UPVC/TUBE-3-90	90	60.55
UPVC/TUBE-3-110	110	89.80
UPVC/TUBE-3-140	140	184.70
UPVC/TUBE-3-160	160	187.45
UPVC/TUBE-3-225	225	431.20

Clear UPVC Tubing

Please Note: Clear PVC pipe is not suitable for outdoor use without adequate UV protection.



With Blue Tint, 5 Metre Lengths

0118	OD (mm)	ID (mm)	£
CUPVC/TUBE2015	20	1.5	46.95
CUPVC/TUBE2515	25	1.5	59.40
CUPVC/TUBE2519	25	1.9	66.90
CUPVC/TUBE3218	32	1.8	71.75
CUPVC/TUBE3224	32	2.4	91.60
CUPVC/TUBE4020	40	2	98.90
CUPVC/TUBE4030	40	3	143.40
CUPVC/TUBE5018	50	1.8	138.50
CUPVC/TUBE5024	50	2.4	150.90
CUPVC/TUBE5037	50	3.7	249.80
CUPVC/TUBE6318	63	1.8	180.45
CUPVC/TUBE6330	63	3	232.50
CUPVC/TUBE6347	63	4.7	398.15
CUPVC/TUBE-7518	75	1.8	215.20
CUPVC/TUBE-7536	75	3.6	378.40
CUPVC/TUBE-9018	90	1.8	217.50
CUPVC/TUBE-9043	90	4.3	538.65
CUPVC/TUBE-11022	110	2.2	316.50
CUPVC/TUBE-11053	110	5.3	803.60
CUPVC/TUBE-12525	125	2.5	539.10
CUPVC/TUBE-14028	140	2.8	697.35
CUPVC/TUBE-16032	160	3.2	779.15
CUPVC/TUBE-16047	160	4.7	1305.80

Pipe Clips



Black PP Clips

1050	ID (mm)	Type	£
PPCLIP-16	16	1	2.70
PPCLIP-20	20	1	3.20
PPCLIP-25	25	1	3.40
PPCLIP-32	32	1	3.80
PPCLIP-40	40	2	5.05
PPCLIP-50	50	2	5.50
PPCLIP-63	63	2	6.90
PPCLIP-75	75	2	13.20
PPCLIP-90	90	2	16.10
PPCLIP-110	110	2	22.35
PPCLIP-140	140	2	39.50
PPCLIP-160	160	2	50.35
PPCLIP-225	225	3	86.70

Hydraulics
Hydraulic QRC
Pneumatic QRC
Ind. Air Prep., Monitor & Test
KELM™ Pneumatics
Pneumatic & Vacuum Equipment
Valves

Ring Main Systems

Adaptors & Fittings
Stainless Steel
Malleable Iron
Hose, Tubing & Couplings

Clamps & Clips
Sprays & Adhesives
Blow Guns & Vacuum
Wash Down & Fuelling
Air Tools
Tools, Hardware & PPE