



## UPVC & ABS Imperial Pipe System



Tech Sheet 10254 for UPVC Tech Sheet 10255 for ABS

### Sockets & Reducing Bushes

UPVC,  
Equal Socket



1050	(-NB-)	£
SO13-12-UPVC	1/2"	1.80
SO13-34-UPVC	3/4"	1.95
SO13-1-UPVC	1"	2.20
SO13-114-UPVC	1.1/4"	4.05
SO13-112-UPVC	1.1/2"	4.70
SO13-2-UPVC	2"	6.80
SO13-212-UPVC	2.1/2"	13.95
SO13-3-UPVC	3"	25.40
SO13-4-UPVC	4"	36.95
SO13-5-UPVC	5"	64.40
SO13-6-UPVC	6"	91.95
SO13-8-UPVC	8"	287.50

ABS, Equal Socket

1050	(-NB-)	£
SO13-12-ABS	1/2"	1.80
SO13-34-ABS	3/4"	2.00
SO13-1-ABS	1"	2.30
SO13-114-ABS	1.1/4"	4.05
SO13-112-ABS	1.1/2"	4.60
SO13-2-ABS	2"	6.90
SO13-212-ABS	2.1/2"	14.70
SO13-3-ABS	3"	27.05
SO13-4-ABS	4"	38.50

UPVC,  
Reducing Socket



1050	(-NB-)	(-NB-)	£
RS13-3412-UPVC	3/4"	1/2"	2.60
RS13-134-UPVC	1"	3/4"	3.50
RS13-1141-UPVC	1.1/4"	1"	4.95
RS13-112112-UPVC	1.1/2"	1.1/4"	5.70
RS13-2112-UPVC	2"	1.1/2"	8.40
RS13-2122-UPVC	2.1/2"	2"	22.55
RS13-3212-UPVC	3"	2.1/2"	25.40
RS13-43-UPVC	4"	3"	36.80

ABS, Reducing Socket

1050	(-NB-)	(-NB-)	£
RS13-3412-ABS	3/4"	1/2"	2.75
RS13-134-ABS	1"	3/4"	3.20
RS13-1141-ABS	1.1/4"	1"	5.05
RS13-112114-ABS	1.1/2"	1.1/4"	4.95
RS13-2112-ABS	2"	1.1/2"	8.80
RS13-3212-ABS	3"	2.1/2"	27.50
RS13-43-ABS	4"	3"	36.15

UPVC,  
Reducing Bushes



1050	(-NB-)	(-NB-)	£
RB93-3412-UPVC	3/4"	1/2"	1.80
RB93-112-UPVC	1"	1/2"	2.20
RB93-134-UPVC	1"	3/4"	2.20
RB93-11412-UPVC	1.1/4"	1/2"	2.65
RB93-11434-UPVC	1.1/4"	3/4"	2.65
RB93-1141-UPVC	1.1/4"	1"	3.20
RB93-11234-UPVC	1.1/2"	3/4"	3.65
RB93-1121-UPVC	1.1/2"	1"	3.65
RB93-112114-UPVC	1.1/2"	1.1/4"	3.65
RB93-21-UPVC	2"	1"	5.05
RB93-2114-UPVC	2"	1.1/4"	5.05
RB93-2112-UPVC	2"	1.1/2"	5.05
RB93-212112-UPVC	2.1/2"	1.1/2"	8.80
RB93-2122-UPVC	2.1/2"	2"	8.80
RB93-3112-UPVC	3"	1.1/2"	14.30
RB93-32-UPVC	3"	2"	14.30
RB93-3212-UPVC	3"	2.1/2"	13.60
RB93-42-UPVC	4"	2"	19.25
RB93-4212-UPVC	4"	2.1/2"	17.30
RB93-43-UPVC	4"	3"	19.50
RB93-53-UPVC	5"	3"	49.90
RB93-54-UPVC	5"	4"	55.80
RB93-64-UPVC	6"	4"	60.10
RB93-86-UPVC	8"	6"	193.00

ABS,  
Reducing Bushes

1050	(-NB-)	(-NB-)	£
RB93-3412-ABS	3/4"	1/2"	1.80
RB93-112-ABS	1"	1/2"	2.30
RB93-134-ABS	1"	3/4"	2.30
RB93-11412-ABS	1.1/4"	1/2"	2.70
RB93-11434-ABS	1.1/4"	3/4"	2.70
RB93-1141-ABS	1.1/4"	1"	3.05
RB93-11234-ABS	1.1/2"	3/4"	3.90
RB93-1121-ABS	1.1/2"	1"	4.05
RB93-112114-ABS	1.1/2"	1.1/4"	4.05
RB93-21-ABS	2"	1"	5.20
RB93-2114-ABS	2"	1.1/4"	5.20
RB93-2112-ABS	2"	1.1/2"	5.20
RB93-2122-ABS	2.1/2"	2"	8.40
RB93-3112-ABS	3"	1.1/2"	14.70
RB93-32-ABS	3"	2"	14.70
RB93-3212-ABS	3"	2.1/2"	14.40
RB93-42-ABS	4"	2"	20.30
RB93-4212-ABS	4"	2.1/2"	18.10
RB93-43-ABS	4"	3"	20.30
RB93-54-ABS	5"	4"	52.25

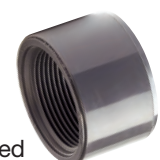
For Air Ring Mains use ABS. UPVC is not suitable for use with compressed air.

UPVC = Unplasticized Poly Vinyl Chloride  
ABS = Acrylonitrile-Butadiene-Styrene Copolymers

UPVC, Plain x  
Threaded Socket, BSPP



1050	(-NB-)	(-NB-)	£
SO14-3534-UPVC	3/4"	3/4"	2.40
SO14-321-UPVC	1"	1"	2.85
SO14-40114-UPVC	1.1/4"	1.1/4"	3.80
SO14-50112-UPVC	1.1/2"	1.1/2"	6.40
SO14-632-UPVC	2"	2"	14.65
SO14-903-UPVC	3"	3"	23.10
SO14-1104-UPVC	4"	4"	42.00



UPVC, Plain x Threaded  
Reducing Bush, BSPP

1050	(-NB-)	(-NB-)	£
RB30-3814-UPVC	3/8"	1/4"	8.75
RB30-1214-UPVC	1/2"	1/4"	8.75
RB30-3438-UPVC	3/4"	1/2"	2.95
RB30-112-UPVC	1"	3/4"	4.05
RB30-11434-UPVC	1.1/4"	3/4"	6.70
RB30-1121-UPVC	1.1/2"	1.1/4"	7.30
RB30-2114-UPVC	2"	1.1/2"	9.70
RB30-212112-UPVC	2.1/2"	2"	16.35
RB30-3212-UPVC	3"	2.1/2"	26.60
RB30-43-UPVC	4"	3"	37.55

Tube O.D. – Size Conversion Table

Nominal Bore	Outside Diameter
3/8"	17.1mm
1/2"	21.3mm
3/4"	26.7mm
1"	33.4mm
1.1/4"	42.2mm
1.1/2"	48.3mm
2"	60.3mm
2.1/2"	75mm
3"	88.9mm
4"	114.3mm
5"	140mm
6"	168.3mm
8"	219.1mm