



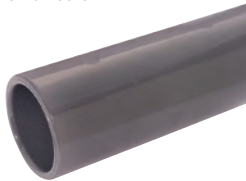
UPVC & ABS Imperial Pipe System



Tech Sheet 10254 for UPVC Tech Sheet 10255 for ABS

UPVC Tubing

NOTE: 6 metre length tube is available on a 3 to 5 working day delivery service. Specified delivery dates and times cannot be guaranteed. Carriage is charged as an extra based on weight and delivery service required. Please speak to our sales department for further details. Delivery of 3 metre lengths may take up to 48 hours.



Class C, 9 bar, 3 Metre Lengths

0118	(-NB-)	£
UPVC/CTUBE-3-2	2"	31.80
UPVC/CTUBE-3-3	3"	49.65
UPVC/CTUBE-3-4	4"	83.85
UPVC/CTUBE-3-5	5"	113.80
UPVC/CTUBE-3-6	6"	163.20
UPVC/CTUBE-3-8	8"	251.20

Class C, 9 bar, 6 Metre Lengths

0118	(-NB-)	£
UPVC/CTUBE-6-2	2"	52.30
UPVC/CTUBE-6-3	3"	104.75
UPVC/CTUBE-6-4	4"	172.10
UPVC/CTUBE-6-5	5"	257.00
UPVC/CTUBE-6-6	6"	368.50

Class E, 15 bar, 3 Metre Lengths

0118	(-NB-)	£
UPVC/ETUBE-3-12	1/2"	7.70
UPVC/ETUBE-3-34	3/4"	11.85
UPVC/ETUBE-3-1	1"	14.20
UPVC/ETUBE-3-114	1.1/4"	23.40
UPVC/ETUBE-3-112	1.1/2"	29.15
UPVC/ETUBE-3-2	2"	44.55
UPVC/ETUBE-3-3	3"	85.20
UPVC/ETUBE-3-4	4"	135.25

Class E, 15 bar, 6 Metre Lengths

0118	(-NB-)	£
UPVC/ETUBE-6-12	1/2"	13.10
UPVC/ETUBE-6-34	3/4"	17.85
UPVC/ETUBE-6-1	1"	23.60
UPVC/ETUBE-6-114	1.1/4"	42.20
UPVC/ETUBE-6-112	1.1/2"	48.65
UPVC/ETUBE-6-2	2"	74.00
UPVC/ETUBE-6-3	3"	163.75
UPVC/ETUBE-6-4	4"	269.35

ABS Tubing

NOTE: 6 metre length tube is available on a 3 to 5 working day delivery service. Specified delivery dates and times cannot be guaranteed. Carriage is charged as an extra based on weight and delivery service required. Please speak to our sales department for further details. Delivery of 3 metre lengths may take up to 48 hours.



Class C, 9 bar, 3 Metre Lengths

0118	(-NB-)	£
ABS/CTUBE-3-1	1"	31.25
ABS/CTUBE-3-114	1.1/4"	52.60
ABS/CTUBE-3-112	1.1/2"	66.65
ABS/CTUBE-3-2	2"	89.80
ABS/CTUBE-3-212	2.1/2"	115.05
ABS/CTUBE-3-3	3"	137.30
ABS/CTUBE-3-4	4"	225.90
ABS/CTUBE-3-5	5"	413.80
ABS/CTUBE-3-6	6"	418.90
ABS/CTUBE-3-8	8"	753.60

Class C, 9 bar, 6 Metre Lengths

0118	(-NB-)	£
ABS/CTUBE-6-1	1"	39.50
ABS/CTUBE-6-114	1.1/4"	70.75
ABS/CTUBE-6-112	1.1/2"	89.90
ABS/CTUBE-6-2	2"	121.55
ABS/CTUBE-6-212	2.1/2"	196.60
ABS/CTUBE-6-3	3"	234.90
ABS/CTUBE-6-4	4"	386.25

Class E, 15 bar, 3 Metre Lengths

0118	(-NB-)	£
ABS/ETUBE-3-12	1/2"	23.85
ABS/ETUBE-3-34	3/4"	36.65
ABS/ETUBE-3-1	1"	48.50
ABS/ETUBE-3-114	1.1/4"	56.90
ABS/ETUBE-3-112	1.1/2"	70.75
ABS/ETUBE-3-2	2"	119.25
ABS/ETUBE-3-3	3"	188.55
ABS/ETUBE-3-4	4"	284.20

Class E, 15 bar, 6 Metre Lengths

0118	(-NB-)	£
ABS/ETUBE-6-12	1/2"	32.00
ABS/ETUBE-6-34	3/4"	49.55
ABS/ETUBE-6-1	1"	61.10
ABS/ETUBE-6-114	1.1/4"	97.20
ABS/ETUBE-6-112	1.1/2"	167.05
ABS/ETUBE-6-2	2"	160.80
ABS/ETUBE-6-3	3"	303.20

Solvent Cement

Tech Sheet 875



ABS

1050

ml

£

ABS

500

26.60

Tech Sheet 876

UPVC

1050

ml

£

PVC

500

55.00

Cleaning Fluid

Tech Sheet 877



500ml

1050

ml

£

MEK-TIN

500

25.90

Due to restrictions imposed by the Transport of Dangerous Goods Act, these products are available for delivery to MAINLAND UK ONLY. For further information please contact our customer service department.

Tube O.D. - Size Conversion Table

Nominal Bore	Outside Diameter
3/8"	17.1mm
1/2"	21.3mm
3/4"	26.7mm
1"	33.4mm
1.1/4"	42.2mm
1.1/2"	48.3mm
2"	60.3mm
2.1/2"	75mm
3"	88.9mm
4"	114.3mm
5"	140mm
6"	168.3mm
8"	219.1mm

- Hydraulics
- Hydraulic QRC
- Pneumatic QRC
- Ind. Air Prep., Monitor & Test
- KELM™ Pneumatics
- Pneumatic & Vacuum Equipment
- Valves

Ring Main Systems

- Adaptors & Fittings
- Stainless Steel
- Malleable Iron
- Hose, Tubing & Couplings
- Clamps & Clips
- Sprays & Adhesives
- Blow Guns & Vacuum
- Wash Down & Fuelling
- Air Tools
- Tools, Hardware & PPE