



Plastic Push-on Fittings

Material: POM

- Suitable for the food process industry.
- Light stable, vacuum & fluid tight.
- Self sealing screw thread.
- To be used with 1mm walled tube.

Temperature Range:
-40°C to +60°C

Maximum Pressure:
10 bar

Straights



Male Stud, BSPT

0270	OD mm		£
80010610	6	1/8"	1.20
80010613	6	1/4"	1.40
80010810	8	1/8"	1.30
80010813	8	1/4"	1.40
80010817	8	3/8"	2.20
80011013	10	1/4"	1.90
80011017	10	3/8"	1.80
80011213	12	1/4"	1.70
80011217	12	3/8"	1.95

Elbows



Male 90°, BSPT

0270	OD mm		£
80050610	6	1/8"	2.15
80050613	6	1/4"	2.30
80050810	8	1/8"	2.20
80050813	8	1/4"	2.50
80051213	12	1/4"	3.50
80051217	12	3/8"	2.80

Tees



Equal

0270	OD mm		£
80030600	6		4.10
80030800	8		4.50
80031200	12		4.95

Banjos



Single Banjo Body, BSPT

0270	OD mm		£
80330610	6	1/8"	1.60
80330613	6	1/4"	1.80
80330810	8	1/8"	1.70
80330813	8	1/4"	1.90



Twin Banjo Body, BSPT

0270	OD mm		£
80340610	6	1/8"	1.95
80340613	6	1/4"	1.95
80340810	8	1/8"	2.80
80340813	8	1/4"	2.95

- Aluminium blue anodized, BSPT.



Banjo Bolts, BSPT

0270		£
80351000	1/8"	3.95
80351300	1/4"	4.30

Gland Nuts



Metric

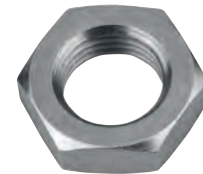
0270	OD mm		£
80430600	6	M10 x 1	0.40
80430800	8	M12 x 1	0.50
80431200	12	M16 x 1	0.50

Bulkhead Connectors



Body, Metric

0270	OD mm		£
80110600	6	M10 x 1	2.80
80110800	8	M12 x 1	3.05
80111200	12	M16 x 1	3.50



Locknuts, Metric

0270		£
80300600	M10 x 1	1.70
80300800	M12 x 1	2.60
80301200	M16 x 1	2.00



Connectors, 2 x Locknuts, Metric

0270	OD mm		£
80090600	6	M10 x 1	6.45
80090800	8	M12 x 1	5.55
80091200	12	M16 x 1	6.10

Hydraulics

Hydraulic QRC

Pneumatic QRC

Ind. Air Prep, Monitor & Test

KELM™ Pneumatics

Pneumatic & Vacuum Equipment

Valves

Ring Main Systems

Adaptors & Fittings

Stainless Steel

Malleable Iron

Hose, Tubing & Couplings

Clamps & Clips

Sprays & Adhesives

Blow Guns & Vacuum

Wash Down & Fuelling

Air Tools

Tools, Hardware & PPE