



Check & Stop Valves



Page Tech Sheet 10134

Temperature Range:
Brass: 0°C to +60°C
Acetal: 0°C to +60°C

Working Pressure:
10 bar (150 psi)

Media:
Air & vacuum only.

Negative Pressure:
-750mm Hg (10Torr)

Cracking Pressure:
0.3bar to 0.5bar (5psi to 7.5psi)

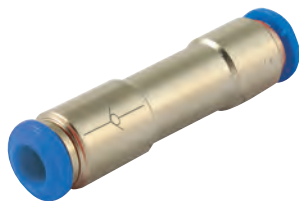
Check Valves

Free flow thread to tube



Tube x BSPT

1060	OD mm	£
PCVC04-01	4	1/8" 9.00
PCVC04-02	4	1/4" 9.00
PCVC06-01	6	1/8" 10.80
PCVC06-02	6	1/4" 9.00
PCVC08-01	8	1/8" 10.80
PCVC08-02	8	1/4" 12.60
PCVC10-02	10	1/4" 12.60
PCVC10-03	10	3/8" 14.40
PCVC12-02	12	1/4" 14.40
PCVC12-03	12	3/8" 14.40



Tube x Tube

1060	OD mm	£
PCVU04	4	9.00
PCVU06	6	9.00
PCVU08	8	9.00
PCVU10	10	12.60

Female x Female, BSPT



1060	£
PCFF01-01	1/8" 10.80
PCFF02-02	1/4" 12.60
PCFF03-03	3/8" 14.40
PCFF04-04	1/2" 16.20

Free Flow Female to Male



Male x Female, BSPP

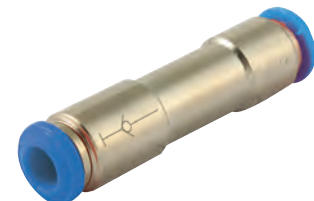
1060	£
PCVF01-01	1/8" 10.80
PCVF02-02	1/4" 12.60
PCVF03-03	3/8" 16.20
PCVF04-04	1/2" 18.00

Stop Valves, Self Sealing



Tube x BSPT

1060	OD mm	£
SPC06-02	6	1/4" 10.80
SPC08-02	8	1/4" 10.80
SPC08-03	8	3/8" 12.60
SPC10-02	10	1/4" 12.60
SPC10-03	10	3/8" 14.40
SPC10-04	10	1/2" 16.20
SPC12-03	12	3/8" 16.20
SPC12-04	12	1/2" 18.00



Tube x Tube

1060	OD mm	£
SPU06	6	10.80
SPU08	8	12.60
SPU10	10	14.40
SPU12	12	16.20