



## One Touch NPT Plastic Push-in Fittings, Imperial



Page Tech Sheet **1964**

**Temperature Range:**  
Brass: 0°C to +60°C  
Acetal: 0°C to +60°C

**Working Pressure:**  
10 bar (150 psi)

**Media:**  
Air & vacuum only.

**Negative Pressure:**  
-750mm Hg (10Torr)

### Male Stud Swivel Elbows



Male Thread, NPT

1060	OD	Wavy	£
2110-8592	1/8"	1/8"	3.30
2110-8600	1/8"	1/4"	2.70
2110-8626	5/32"	1/8"	3.30
2110-8634	5/32"	1/4"	2.70
2110-8659	3/16"	1/8"	2.80
2110-8667	3/16"	1/4"	2.70
2110-8691	3/16"	3/8"	3.25
2110-8717	1/4"	1/8"	3.30
2110-8725	1/4"	1/4"	3.10
2110-8733	1/4"	3/8"	3.95
2110-8741	5/16"	1/8"	3.00
2110-8758	5/16"	1/4"	3.00
2110-8766	5/16"	3/8"	3.45
2110-8774	3/8"	1/8"	3.60
2110-8782	3/8"	1/4"	3.85
2110-8790	3/8"	3/8"	4.60
2110-8808	3/8"	1/2"	6.20
2110-8816	1/2"	1/4"	6.30
2110-8824	1/2"	3/8"	6.30
2110-8832	1/2"	1/2"	7.40

Male Thread, UNF

1060	OD	Wavy	£
2110-8584	1/8"	10-32	2.80
2110-8618	5/32"	10-32	2.70
2110-8642	3/16"	10-32	2.70
2110-8709	1/4"	10-32	3.30



Extended Male Thread, NPT

1060	OD	Wavy	£
2110-8857	1/8"	1/8"	3.25
2110-8865	1/8"	1/4"	3.10
2110-8899	5/32"	1/8"	3.10
2110-8907	5/32"	1/4"	3.10
2110-8923	3/16"	1/8"	3.30
2110-8931	3/16"	1/4"	3.10
2110-8949	3/16"	3/8"	3.95
2110-8964	1/4"	1/8"	3.45
2110-8972	1/4"	1/4"	3.80
2110-8980	1/4"	3/8"	3.95
2110-8998	5/16"	1/8"	3.35
2110-9004	5/16"	1/4"	3.35
2110-9012	5/16"	3/8"	3.65
2110-9020	3/8"	1/8"	4.90
2110-9038	3/8"	1/4"	4.70
2110-9046	3/8"	3/8"	4.70
2110-9053	3/8"	1/2"	8.70
2110-9061	1/2"	1/4"	7.10
2110-9079	1/2"	3/8"	7.10
2110-9087	1/2"	1/2"	7.10

Extended Male Thread, UNF

1060	OD	Wavy	£
2110-8840	1/8"	10-32	3.10
2110-8881	5/32"	10-32	3.10
2110-8915	3/16"	10-32	3.10
2110-8956	1/4"	10-32	3.10

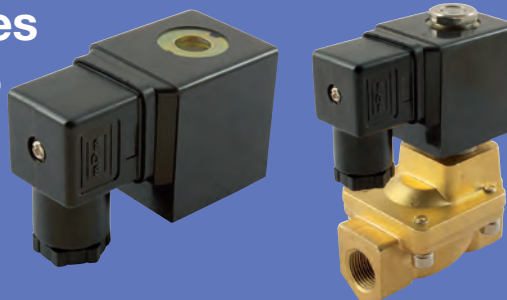
### Female Swivel Elbows



Female Thread, NPT

1060	OD	Wavy	£
2110-9095	1/8"	1/8"	3.10
2110-9103	1/8"	1/4"	3.10
2110-9111	5/32"	1/8"	3.10
2110-9129	5/32"	1/4"	3.10
2110-9137	3/16"	1/8"	3.10
2110-9145	3/16"	1/4"	3.10
2110-9178	1/4"	1/8"	3.25
2110-9186	1/4"	1/4"	3.80
2110-9194	1/4"	3/8"	3.95
2110-9202	5/16"	1/8"	3.35
2110-9228	5/16"	1/4"	3.35
2110-9236	5/16"	3/8"	3.95
2110-9251	5/16"	1/2"	6.20
2110-9277	3/8"	1/8"	4.70
2110-9269	3/8"	1/4"	4.70
2110-9285	3/8"	3/8"	4.70
2110-9293	3/8"	1/2"	7.35
2111-0093	1/2"	1/4"	7.10
2111-0101	1/2"	3/8"	7.10
2111-0119	1/2"	1/2"	7.10

For **Solenoid Valves**  
see pages 583-585



- Hydraulics
- Hydraulic QRC
- Pneumatic QRC
- Ind. Air Prep, Monitor & Test
- KELM™ Pneumatics
- Pneumatic & Vacuum Equipment
- Valves
- Ring Main Systems
- Adaptors & Fittings
- Stainless Steel
- Malleable Iron
- Hose, Tubing & Couplings
- Clamps & Clips
- Sprays & Adhesives
- Blow Guns & Vacuum
- Wash Down & Fuelling
- Air Tools
- Tools, Hardware & PPE