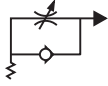




Flow Regulators



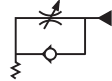
Screwdriver Quick-Fit Flow Regulators



For Cylinders, Metric & BSPP

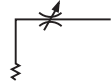
1000	To Fit Tube Size mm		£
8950-4/2.7-1/8	4/2.7	1/8"	18.85
8950-6/4-M5	6/4	M5	24.05
8950-6/4-1/8	6/4	1/8"	18.85
8950-6/4-1/4	6/4	1/4"	19.00
8950-8/6-1/8	8/6	1/8"	18.85
8950-8/6-1/4	8/6	1/4"	20.40

For Valves, BSPP



1000	OD mm		£
8960-6/4-1/8	6/4	1/8"	17.55
8960-6/4-1/4	6/4	1/4"	19.00
8960-8/6-1/8	8/6	1/8"	17.55

For Bi-directional, BSPP



1000	OD mm		£
8970-6/4-M5	6/4	M5	19.10
8970-6/4-1/8	6/4	1/8"	14.85
8970-6/4-1/4	6/4	1/4"	16.45
8970-8/6-1/4	8/6	1/4"	16.45

Manual Quick-Fit Female BSPP



For Cylinders, BSPP

1000		£
8957-1/8	1/8"	18.85
8957-1/4	1/4"	22.05

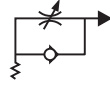
For Valves, BSPP

1000		£
8967-1/8	1/8"	17.55
8967-1/4	1/4"	22.00

For Bi-directional, BSPP

1000		£
8977-1/8	1/8"	16.05
8977-1/4	1/4"	17.85

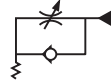
Manual Quick-Fit Flow Regulators



For Cylinders, BSPP

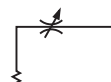
1000	To Fit Tube Size mm		£
8955-4/2.7-1/8	4/2.7	1/8"	19.05
8955-6/4-1/8	6/4	1/8"	19.05
8955-6/4-1/4	6/4	1/4"	21.40
8955-8/6-1/8	8/6	1/8"	19.00
8955-8/6-1/4	8/6	1/4"	21.35
8955-10/8-1/4	10/8	1/4"	21.20

For Valves, Metric & BSPP



1000	OD mm		£
8965-4/2.7-M5	4/2.7	M5	23.50
8965-6/4-M5	6/4	M5	27.90
8965-8/6-1/8	8/6	1/8"	17.70
8965-10/8-1/4	10/8	1/4"	20.50

For Bi-directional, BSPP



1000	OD mm		£
8975-4/2.7-1/8	4/2.7	1/8"	15.05
8975-6/4-1/8	6/4	1/8"	16.15

Screwdriver Flow Regulator Valves



For Cylinders, Male Thread, BSPP

1000		£
8900-1/8	1/8"	12.35
8900-1/4	1/4"	13.70

For Valves, Male Thread, Metric

1000		£
8910-M5	M5	16.45

For Bi-directional Male Thread, BSPP

1000		£
8920-1/4	1/4"	10.50

Screwdriver Quick-Fit Female BSPP



For Cylinders, BSPP

1000		£
8952-1/8	1/8"	18.70
8952-1/4	1/4"	21.20

For Valves, BSPP

1000		£
8962-1/8	1/8"	18.70

For Bi-directional, BSPP

1000		£
8972-1/8	1/8"	14.65
8972-1/4	1/4"	17.00

Manual Flow Regulator Valves



For Valves, Male Thread, Metric

1000		£
8915-M5	M5	18.20

For Bi-directional Male Thread, Metric & BSPP

1000		£
8925-M5	M5	12.70
8925-1/4	1/4"	11.30

Hydraulics

Hydraulic QRC

Pneumatic QRC

Ind. Air Prep., Monitor & Test

KELM™ Pneumatics

Pneumatic & Vacuum Equipment

Valves

Ring Main Systems

Adaptors & Fittings

Stainless Steel

Malleable Iron

Hose, Tubing & Couplings

Clamps & Clips

Sprays & Adhesives

Blow Guns & Vacuum

Wash Down & Fuelling

Air Tools

Tools, Hardware & PPE