
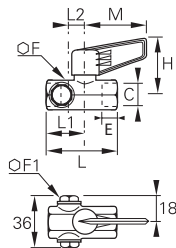




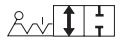
# Universal Light Series


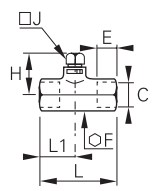


## 0494 2/2 In-Line Ball Valve, 2 Vent Plugs, Female BSPP Thread



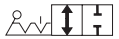
	<p>Nickel-plated brass, NBR</p> 	<p><b>C</b>  </p>	<b>E</b>	<b>F</b>	<b>F1</b>	<b>H</b>	<b>L</b>	<b>L1</b>	<b>L2</b>	<b>M</b>	<b>kg</b>
		<p>G3/8 7 <a href="#">0494 07 17</a></p> <p>Technical polymer handle</p>	11	22	16	38	60	20	15	43	0.178


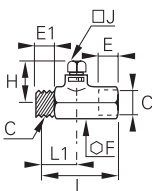


## 0497 2/2 Ball Valve, Square Stem, Female BSPP Thread



	<p>Brass, NBR</p> 	<p><b>C</b>  </p>	<b>E</b>	<b>F</b>	<b>H</b>	<b>J</b>	<b>L</b>	<b>L1</b>	<b>kg</b>
		<p>G1/4 4 <a href="#">0497 04 13</a></p> <p>G3/8 7 <a href="#">0497 07 17</a></p> <p>G1/2 10 <a href="#">0497 10 21</a></p> <p>G3/4 13 <a href="#">0497 13 27</a></p>	9	17	25	7	39	17	0.066
			11	22	26	7	45	20	0.122
			12	24	29	10	54	25	0.148
			14	30	30	10	62	28	0.230

## 0496 2/2 Ball Valve, Square Stem, Male/Female BSPP Thread



	<p>Brass, NBR</p> 	<p><b>C</b>  </p>	<b>E</b>	<b>E1</b>	<b>F</b>	<b>H</b>	<b>J</b>	<b>L</b>	<b>L1</b>	<b>kg</b>
		<p>G1/4 4 <a href="#">0496 04 13</a></p> <p>G3/8 7 <a href="#">0496 07 17</a></p> <p>G1/2 10 <a href="#">0496 10 21</a></p> <p>G3/4 13 <a href="#">0496 13 27</a></p>	7	9	17	25	7	39	17	0.065
			8	11	22	26	7	45	20	0.118
			10	12	24	29	10	53	24	0.150
			12	14	30	30	10	59	28	0.222