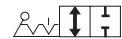
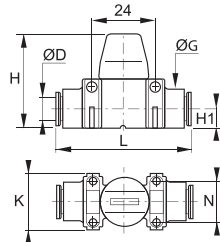


Mini Series

7910 2/2 In-Line Mini-Ball Valve

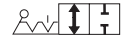


Technical polymer, NBR

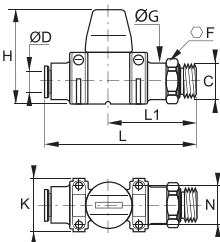


ØD		G	H	H1	K	L	N	kg
4	7910 04 00	15	37	7.5	22	51	16	0.039
6	7910 06 00	15	37	7.5	22	52	16	0.034
8	7910 08 00	15	37	7.5	22	52	16	0.025
10	7910 10 00	20	43	11	30	66	22	0.060
12	7910 12 00	20	43	11	30	66	22	0.040

7911 2/2 In-Line Mini-Ball Valve, Male BSPP Thread



Technical polymer, nickel-plated brass, NBR

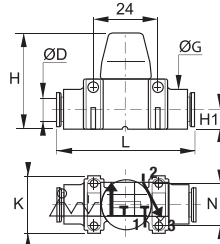


ØD	C		F	G	H	K	L	L1	N	kg
6	G1/8	7911 06 10	13	14	37	22	62	37	16	0.045
8	G1/4	7911 08 13	16	17.5	37	22	61	35	16	0.040
10	G3/8	7911 10 17	20	22	43	30	74	41	22	0.075
12	G1/2	7911 12 21	24	26	43	30	75	42	22	0.075

7913 3/2 In-Line Mini-Ball Valve with Vent

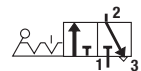


Technical polymer, NBR

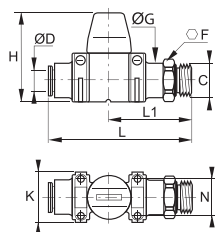


ØD		G	H	H1	K	L	N	kg
4	7913 04 00	15	37	7.5	22	51	16	0.040
6	7913 06 00	15	37	7.5	22	52	16	0.035
8	7913 08 00	15	37	7.5	22	52	16	0.025
10	7913 10 00	20	43	11	30	66	22	0.060
12	7913 12 00	20	43	11	30	66	22	0.045

7914 3/2 In-Line Mini-Ball Valve with Vent, Male BSPP Thread



Technical polymer, nickel-plated brass, NBR



ØD	C		F	G	H	K	L	L1	N	kg
6	G1/8	7914 06 10	13	14	37	22	62	37	16	0.045
8	G1/4	7914 08 13	16	17.5	37	22	61	35	16	0.040
10	G3/8	7914 10 17	20	22	43	30	74	41	22	0.058
12	G1/2	7914 12 21	24	26	43	30	75	42	22	0.075

7000 Joining Clips

Technical polymer



ØD		kg
4	7000 00 05	0.004
6	7000 00 05	0.004
8	7000 00 05	0.004
10	7000 00 06	0.009
12	7000 00 06	0.009