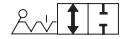


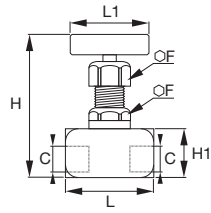
# Stainless Steel Needle Valves

**0591**

Needle Valve, Female BSPP Thread



Stainless steel 316L, PTFE



C	DN		F	H min	H max	H1	L	L1	kg
G1/8	3	<a href="#">0591 03 10</a>	22	90	99	25	45	48	0.345
G1/4	4	<a href="#">0591 04 13</a>	22	90	99	25	50	48	0.356
G3/8	5	<a href="#">0591 05 17</a>	22	90	104	30	56	48	0.430
G1/2	6	<a href="#">0591 06 21</a>	22	90	104	30	62	48	0.483