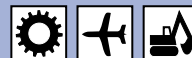




Nominal Diameter

5 = 20 mm²

TEMA Series

T2300

actual size

**Technical Description**

The T2300 hydraulic coupling is characterised by a low pressure drop and maximum flow capacity. The coupling system is available as double shut-off, straight through or single shut-off version. Also available in stainless steel.

Connected length in total:
59 mm

Material

Coupling
Coupling Body

Sleeve
Valve
Springs
Locking Balls
Seals

Plug

Plug Body

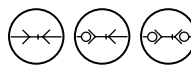
Valve
Springs
Seals

Pressures

Bursting Pressure coupled
Working Pressure uncoupled

Advantages

Straight-through – minimum pressure drop. High operating pressure. Corrosion resistant. Compact dimensions.

Available Valves**Standard**

Brass, Nickel Plated and Chromated
Brass, Nickel Plated
Brass
AISI 301
AISI 420 C
NBR/FKM

Steel Hardened, Zinc-Plated, Yellow passivated, sealed
Brass
AISI 301
NBR/FKM

>800 bar
100 bar

Working Pressure

See chart.

Working Temperature*

-30°C up to +100°C (NBR)
-25°C up to +200°C (FKM)
depending on the medium.

*At a temperature below -40°C and above +200°C special seals are available on request.

Stainless Steel

AISI 316
AISI 316
AISI 316
AISI 301
AISI 420 C
FKM

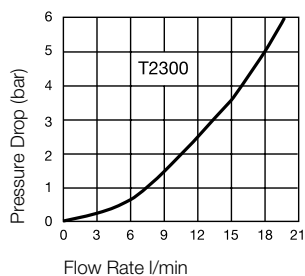
AISI 316

AISI 316
AISI 301
FKM

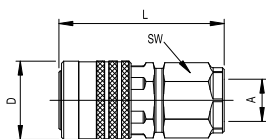
>800 bar
100 bar

Flow Capacity

Viscosity for 32cSt at 40°C
as per ISO 7241/2-2000

**Couplings****TEMA Series T2300**

Connec- tion A	Hex SW	L mm	D mm	Valve	Working press. in bar	Version	Seal	Part Number	DS
G 1/8	15	38	18	with	200	Standard	NBR	T2310	■
G 1/8	15	38	18	with	200	Standard	FKM	T2310 V	■□
G 1/8	15	38	18	with	200	Stainless Steel	FKM	T2310 RV ²⁾	■□
G 1/8	15	38	18	with	200	Stainless Steel	FKM	T2310 RFV ¹⁾ 2)	■
G 1/8	15	38	18	without	200	Standard	NBR	T2310 UV	■□
G 1/8	15	38	18	without	200	Standard	FKM	T2310 VUV	■□
G 1/8	15	38	18	without	200	Stainless Steel	FKM	T2310 RVUV ²⁾	■□



Female Thread

DS = Delivery Status:

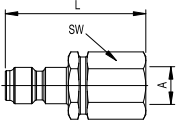
■ in stock

■□ on short call

■□ medium term delivery

Plugs

TEMA Series T2300

	Connec- tion A	Hex SW	L mm	D mm	Valve	Working press. in bar	Version	Seal	Part Number	DS
 <p>Female Thread</p>	G 1/8	15	36		with	200	Standard	NBR	T2320	■
	G 1/8	15	36		with	200	Standard	FKM	T2320 V	■
	G 1/8	15	36		with	200	Stainless Steel	FKM	T2320 RV ²⁾	□
	G 1/8	15	36		with	200	Stainless Steel	FKM	T2320 RFV ^{1) 2)}	■ □
	G 1/8	15	36		without	200	Standard		T2320 UV	■ □
	G 1/8	15	36		without	200	Stainless Steel		T2320 RUV ²⁾	■ □

Seal-Kit for Coupling

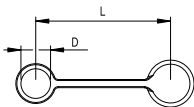
TEMA Series T2300

Description	Material	Part Number	DS
Coupling	NBR	T11310 N	■ □
Coupling	FKM	T11310 V	■ □
Further sealing material on request.			

Dust Protection

TEMA Series T2300

Description	L mm	D mm	Material	Color	Part Number	DS
Coupling	55	15	PVC	Red	T2315	■
Plug	55	15	PVC	Red	T125	■
Further colors on request.						



¹⁾ Valve made of brass

²⁾ For pulsating pressure, the pressure must not exceed 50% of the given value