

63mm Dia. Pressure Gauges

Reservoir Equipment

Specification



Construction:

Case: Natural finish stainless steel.
 Window: Non-splintering clear acrylic glass.
 Movement: Cu alloy.
 Dial: White plastic, with pointer stop pin.
 Pointer: Black plastic.

Liquid filling:

Glycerine 99.7%.

Working pressure:

Max 75% of the full scale value.

Process temperature range:

0°C to 60°C maximum.

Accuracy:

1.6% FSD.

Wetted parts connector:

Copper alloy.

Bourdon tube:

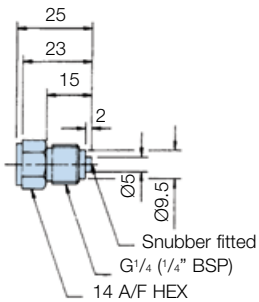
< 60 bar = Cu alloy, C-type, soft soldered.

> 60 bar = Cu alloy, helical type, soft soldered.

IP Class:

IP65.

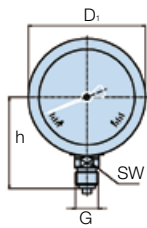
Mounting Stem Detail



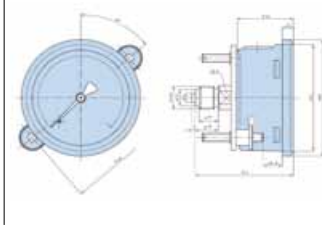
Note: It is recommended that all glycerine gauges should be mounted in the vertical position with gauge case relief valve uppermost. Pressure range up to 1000 bar available.

Installation Details

Bottom Connection



Panel Mounting (Centre Back)



Dimensions (mm)

a	b	D ₁	D ₂	e	G	h	SW	Weight	
±0.5		32	68	62	6.5	±1	G ¹ / ₄	14	0.21

Bottom Connection

Dimensions (mm)

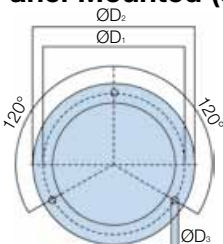
b	b ₂	D ₁	D ₂	e	G	SW	Weight		
±0.5±1		32	56	68	62	6.5	G ¹ / ₄	14	0.21

Panel Mounting (Lower Back)

Note 1: Panel cut-out 64.5 ±0.5

Note 2: 13mm on the outside radius required to allow for fixing clamp.

Panel Mounted (3-hole flange)



Note 1: Gauge dimensions as for panel mounting option above with flange as shown below.

Note 2: Panel cut-out for 3-hole mounting 67±0.3.

Dimensions (mm)

D1	D2	D3
75	85	3.6

Ordering Information

Bottom Connection

Part number	Supersedes	Pressure range	Connector type
PGB0631010	PGC.0631.010	0-10 bar	G ¹ / ₄ Bottom
PGB0631016	PGC.0631.016	0-16 bar	G ¹ / ₄ Bottom
PGB0631025	PGC.0631.025	0-25 bar	G ¹ / ₄ Bottom
PGB0631040	PGC.0631.040	0-40 bar	G ¹ / ₄ Bottom
PGB0631060	PGC.0631.060	0-60 bar	G ¹ / ₄ Bottom
PGB0631100	PGC.0631.100	0-100 bar	G ¹ / ₄ Bottom
PGB0631160	PGC.0631.160	0-160 bar	G ¹ / ₄ Bottom
PGB0631250	PGC.0631.250	0-250 bar	G ¹ / ₄ Bottom
PGB0631400	PGC.0631.400	0-400 bar	G ¹ / ₄ Bottom
PGB0631600	PGC.0631.600	0-600 bar	G ¹ / ₄ Bottom
PGB0631004	PGC.0631.004	0-4 bar	G ¹ / ₄ Bottom

Panel Mounting

Part number	Supersedes	Pressure range	Connector type
PGC0631010	PGC.0631.010	0-10 bar	G ¹ / ₄ Panel
PGC0631016	PGC.0631.016	0-16 bar	G ¹ / ₄ Panel
PGC0631025	PGC.0631.025	0-25 bar	G ¹ / ₄ Panel
PGC0631040	PGC.0631.040	0-40 bar	G ¹ / ₄ Panel
PGC0631060	PGC.0631.060	0-60 bar	G ¹ / ₄ Panel
PGC0631100	PGC.0631.100	0-100 bar	G ¹ / ₄ Panel
PGC0631160	PGC.0631.160	0-160 bar	G ¹ / ₄ Panel
PGC0631250	PGC.0631.250	0-250 bar	G ¹ / ₄ Panel
PGC0631400	PGC.0631.400	0-400 bar	G ¹ / ₄ Panel
PGC0631004	PGC.0631.004	0-4 bar	G ¹ / ₄ Panel
PGC0631600	PGC.0631.600	0-600 bar	G ¹ / ₄ Panel

Panel Mounted (3-hole flange)

Part number	Supersedes	Pressure range	Connector type
PGF0631060	PGF.0631.060	0-60 bar	G ¹ / ₄ Panel Flange
PGF0631100	PGF.0631.100	0-100 bar	G ¹ / ₄ Panel Flange
PGF0631160	PGF.0631.160	0-160 bar	G ¹ / ₄ Panel Flange
PGF0631250	PGF.0631.250	0-250 bar	G ¹ / ₄ Panel Flange
PGF0631400	PGF.0631.400	0-400 bar	G ¹ / ₄ Panel Flange
PGF0631004	PGF.0631.004	0-4 bar	G ¹ / ₄ Panel Flange
PGF0631010	PGF.0631.010	0-10 bar	G ¹ / ₄ Panel Flange
PGF0631016	PGF.0631.016	0-16 bar	G ¹ / ₄ Panel Flange
PGF0631025	PGF.0631.025	0-25 bar	G ¹ / ₄ Panel Flange
PGF0631040	PGF.0631.040	0-40 bar	G ¹ / ₄ Panel Flange
PGF0631600	PGF.0631.600	0-600 bar	G ¹ / ₄ Panel Flange

Note 1: Part numbers featured with bold highlighted codes will ensure a 'standard' product selection.

Note 2: Alternate displayed part number selection will require you to contact Parker Filtration for availability.

*Note 3: Any subsequent changes to gauge accuracy will be notified.

